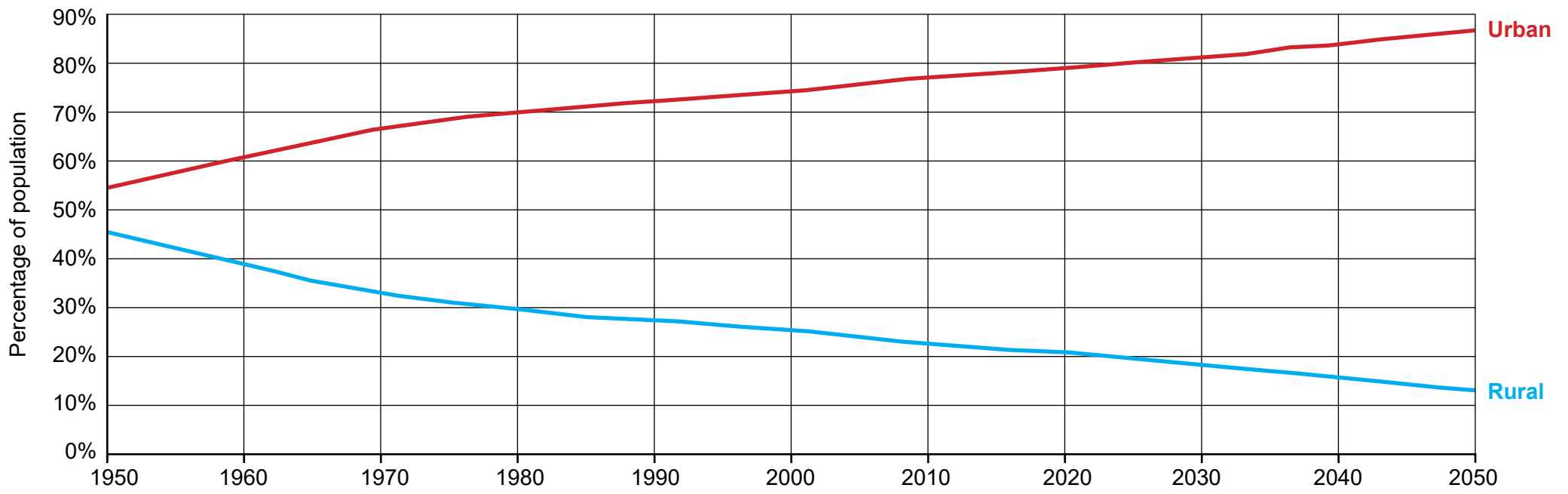


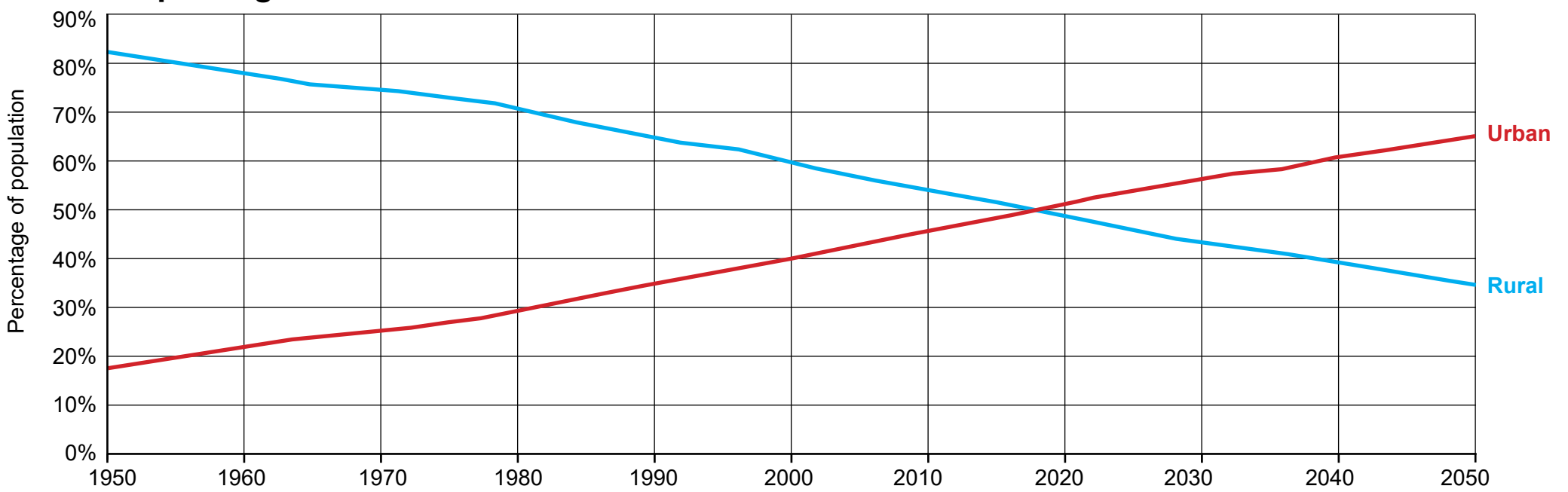
### Source 8: Do more people live in urban or rural areas?

Adapted from: Ghosh, I. (2018). *Do more people live in urban or rural areas?* [Interactive chart]. Retrieved May, 2019, from <https://www.visualcapitalist.com/> [...] Used under Creative Commons Attribution 4.0 International Public Licence

#### More developed regions

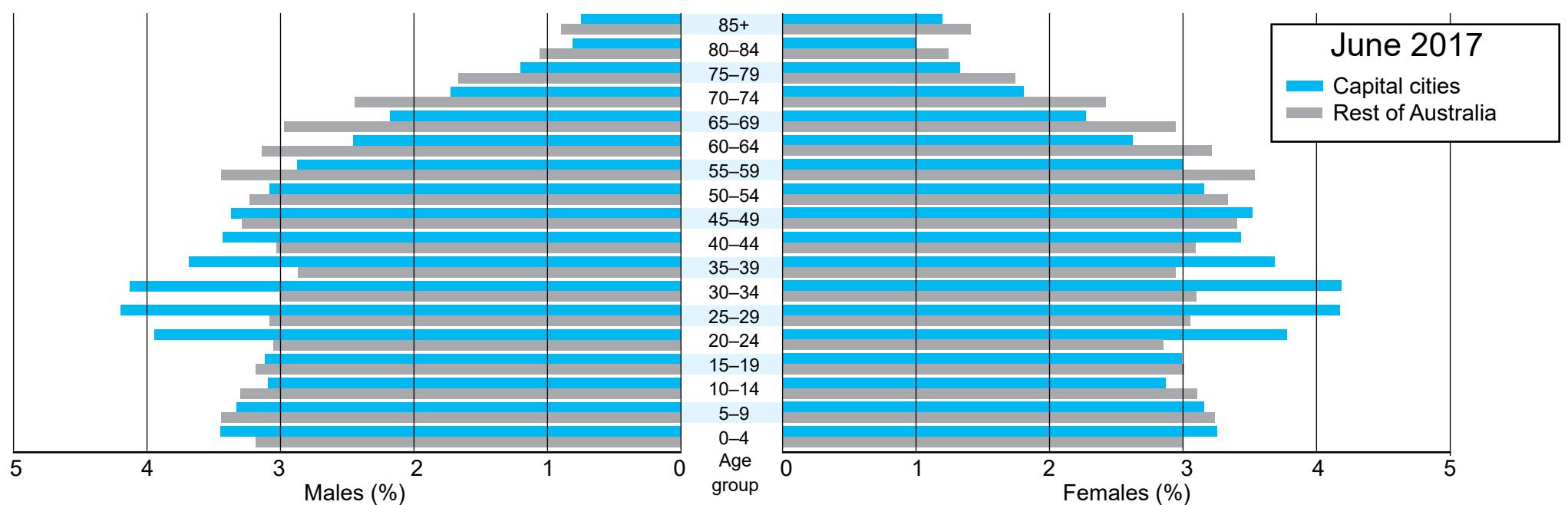
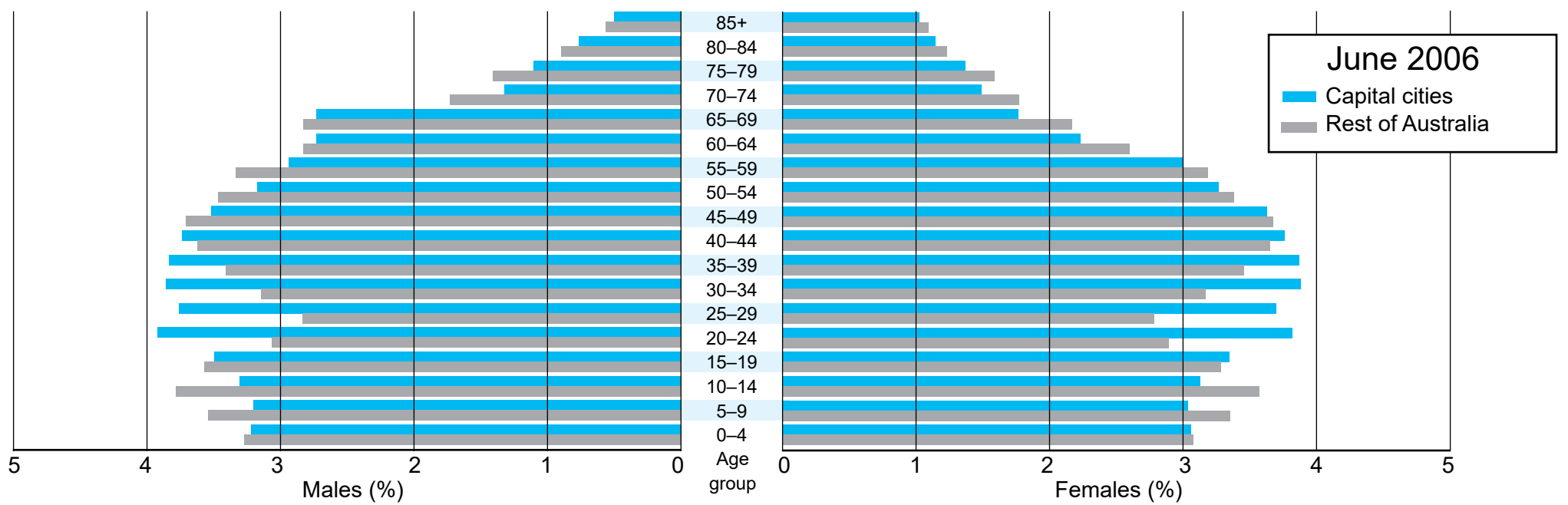


#### Less developed regions



### Source 9: Age and sex distribution (%) capital cities and rest of Australia, June 2006 and June 2017

Top graph adapted from: Australian Bureau of Statistics. (2008). *Age and sex distribution [...] 2006* [Graph]. Retrieved May, 2019, from <http://www.abs.gov.au/> [...] Used under Creative Commons Attribution 4.0 International Licence. Bottom graph adapted from: Australian Bureau of Statistics. (2018). *Age and sex distribution [...] 2017* [Graph]. Retrieved May, 2019, from <http://www.abs.gov.au/> [...] Used under Creative Commons Attribution 4.0 International Licence





# Source 1: Noarlunga topographic map 2001

Adapted from: Department for Environment and Water, the Government of South Australia. (2001). *Noarlunga South Australia* (4th ed.) [Topographic map; 1:50 000]. Retrieved March, 2019, from <https://www.environment.sa.gov.au/>[...]. Legend adapted from: Department of Lands, the Government of South Australia. (1989). *Hawker South Australia* (2nd ed.) [Topographic map; 1:50 000]. SA: Department of Environment and Heritage.







Source 3: Maslin Beach ground photograph 2019

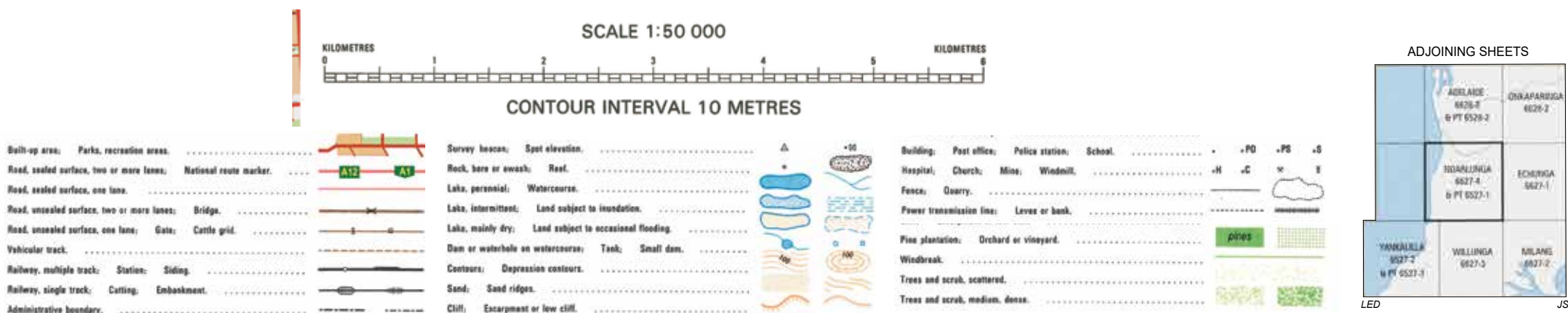


Maslin Beach ground photograph by courtesy member of examining panel.

Source 4: Old Noarlunga ground photograph 2019



Old Noarlunga ground photograph by courtesy member of examining panel.



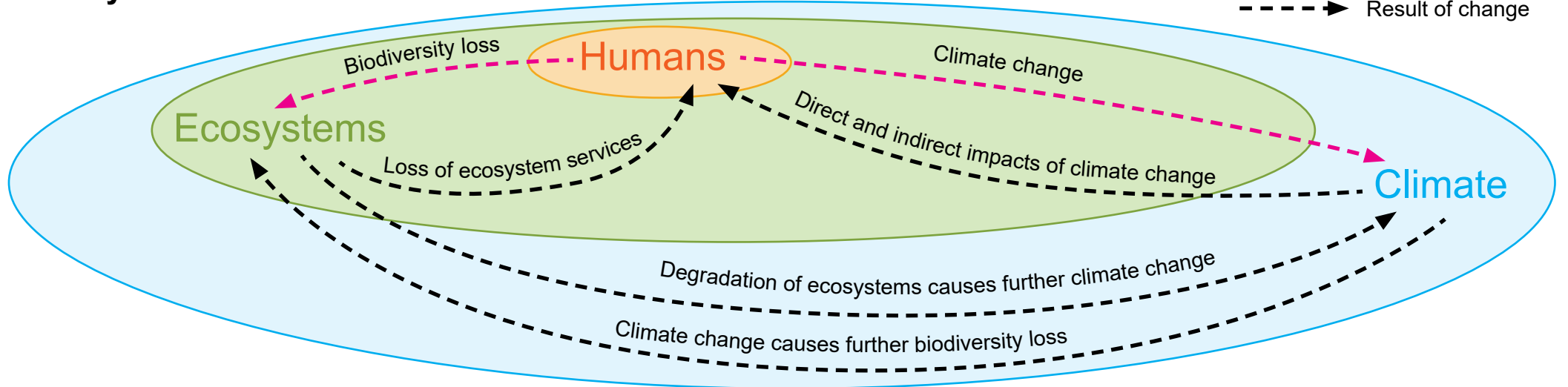
Government of Western Australia  
School Curriculum and Standards Authority





**Source 5: The results of change due to human activity on ecosystems and climate**

--- Negative impact of behaviour/activities  
 --- Result of change



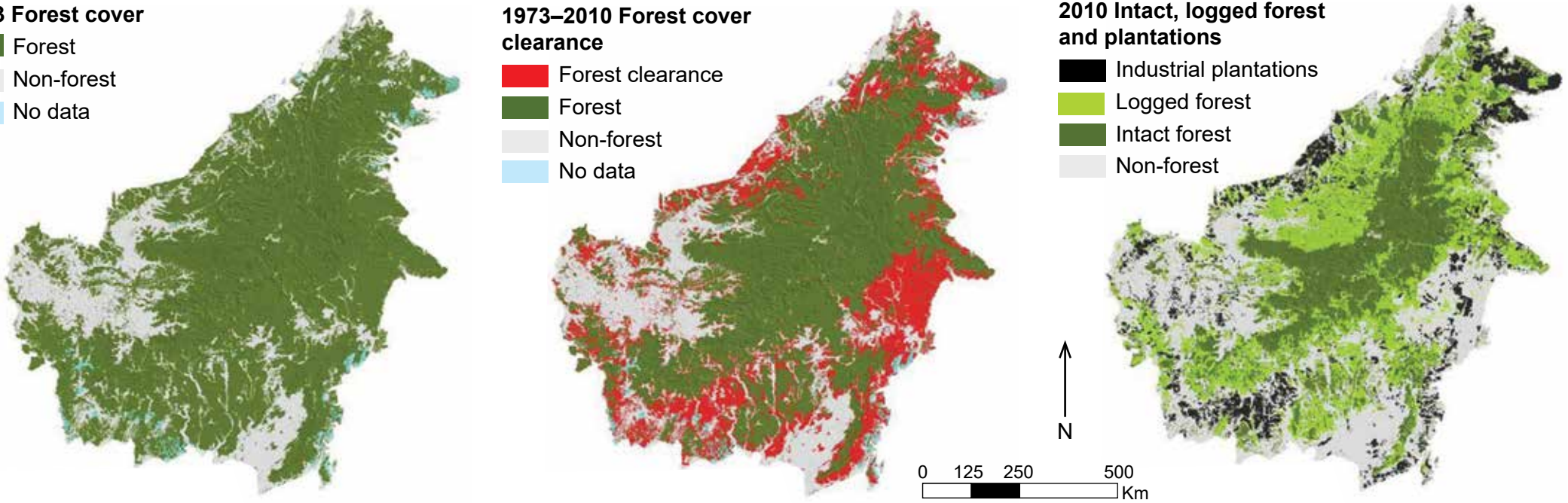
Adapted from: Zari, M. P. (2014). Ecosystem services analysis in response to biodiversity loss caused by the built environment. *S.A.P.I.EN.S*, 7 (No. 1), p. 9, fig. 3. Retrieved May, 2019, from <https://journals.openedition.org/sapiens/1684>. Used under Creative Commons Attribution 3.0 Licence

**Source 6: Satellite image of forest cover clearance, Borneo (Indonesia and Malaysia) 1973–2010**

**1973 Forest cover**  
 ■ Forest  
 ■ Non-forest  
 ■ No data

**1973–2010 Forest cover clearance**  
 ■ Forest clearance  
 ■ Forest  
 ■ Non-forest  
 ■ No data

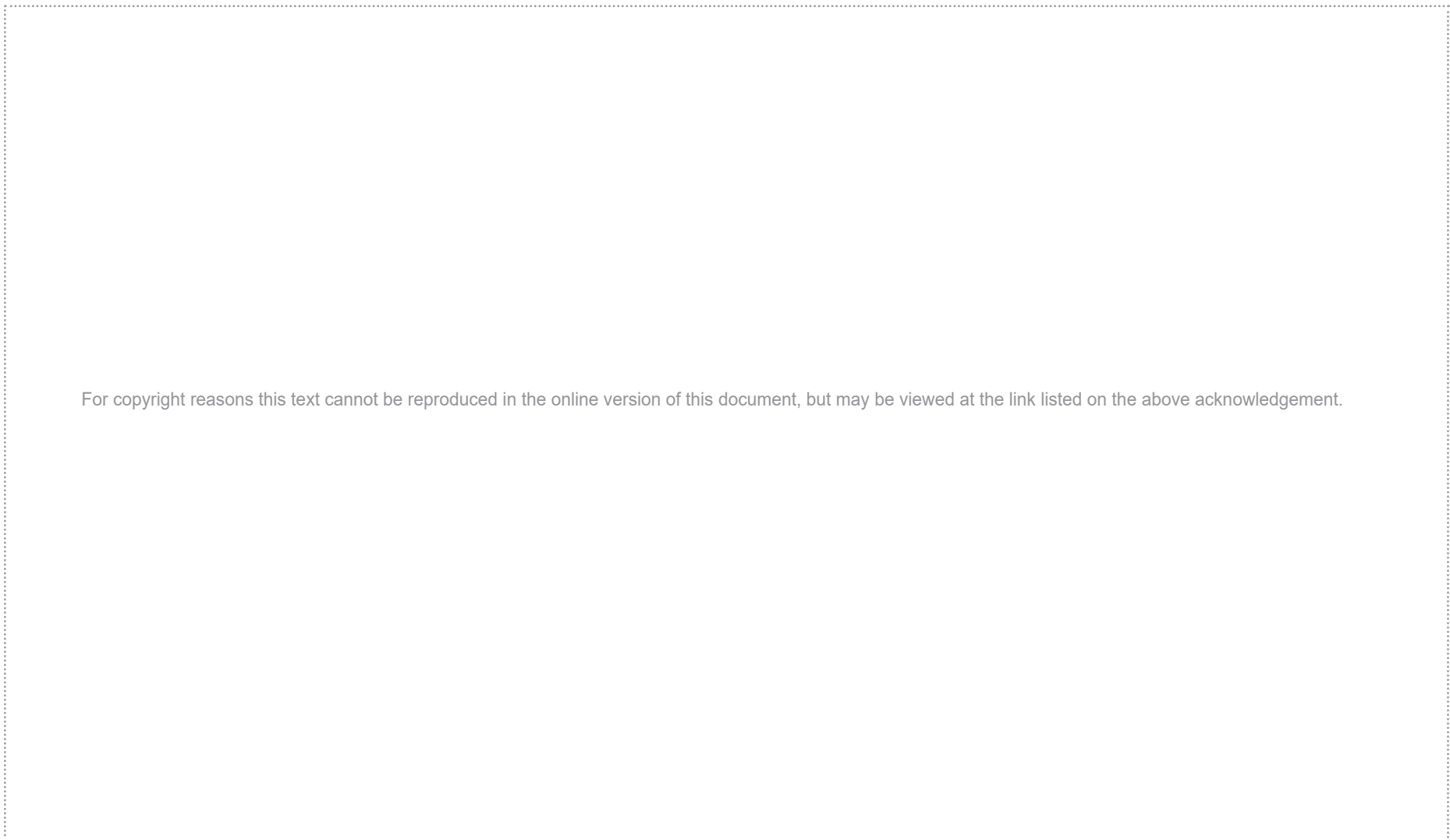
**2010 Intact, logged forest and plantations**  
 ■ Industrial plantations  
 ■ Logged forest  
 ■ Intact forest  
 ■ Non-forest



Adapted from: Gaveau, D., Sloan, S., Molidena, E., et al. (2014, July). Four decades of forest [...]. *PLoS ONE*. 9 (7), p. 6, fig. 3. Retrieved May, 2019, from <https://www.researchgate.net/publication/263972689>[...] Used under Creative Commons Attribution 4.0 International Licence

**Source 7: The growth of worldwide rural and urban population 1960–2016**

Adapted from: Cinnéide, D. (2019). *Where do people live worldwide? 1960 – 2016*. Retrieved May, 2019, from <https://public.tableau.com/profile/docinsight#!/vizhome/TheRiseoftheCity/Dashboard1>



For copyright reasons this text cannot be reproduced in the online version of this document, but may be viewed at the link listed on the above acknowledgement.