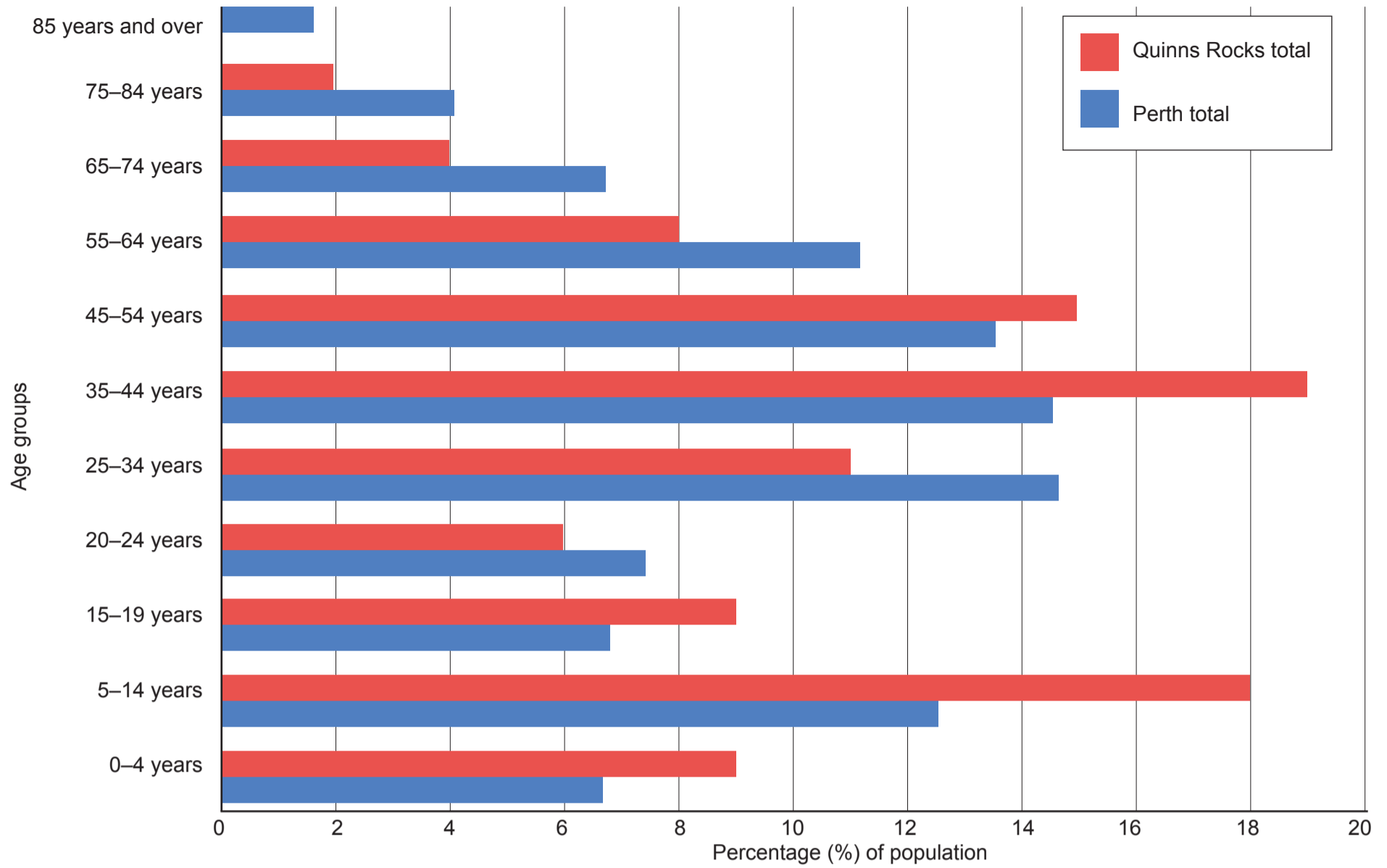


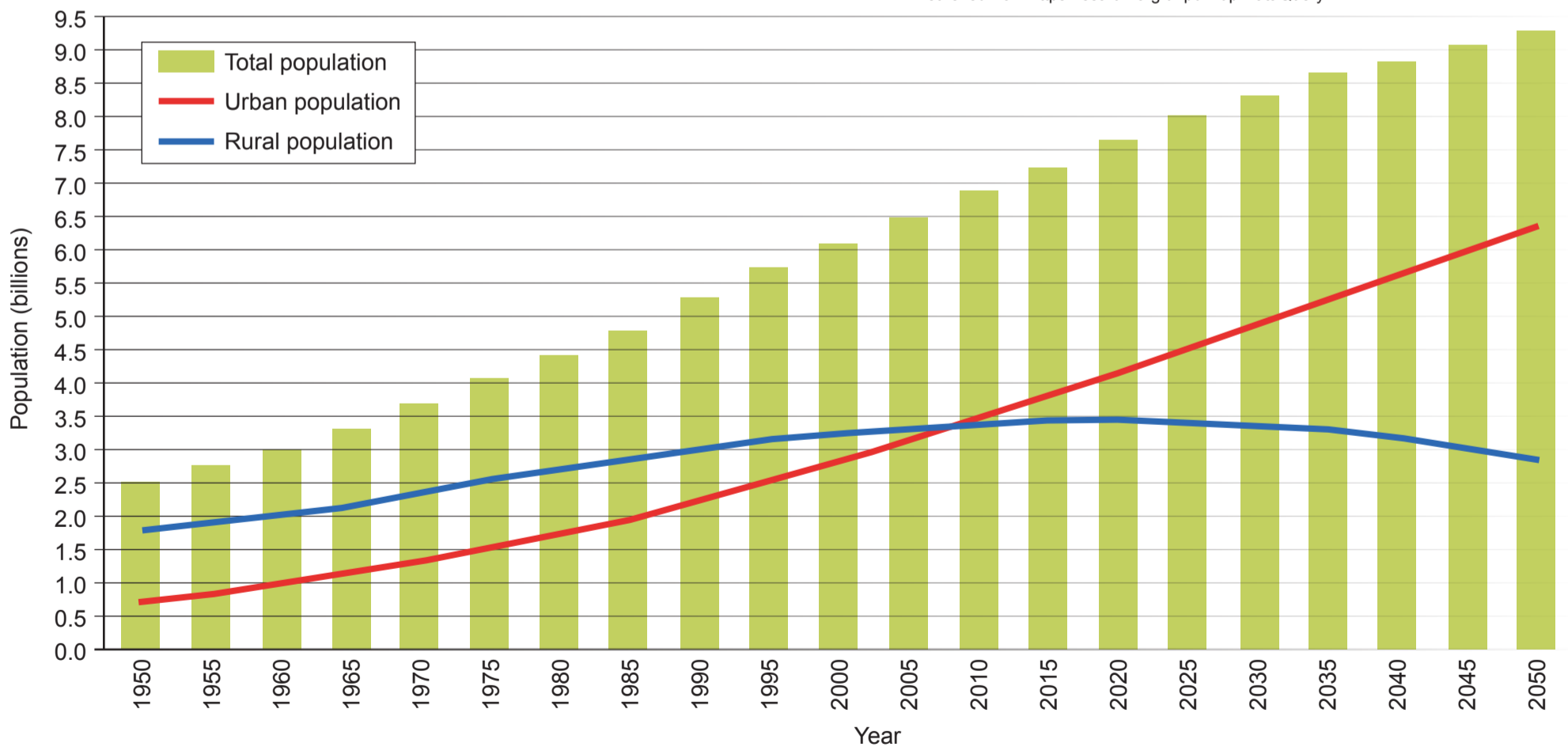
Source 6: Demographic characteristics of Quinns Rocks and Perth Metropolitan Area



Data source: Australian Bureau of Statistics (ABS).(2011). 5GPER – Greater Perth census community profile. Retrieved from www.censusdata.abs.gov.au/census_services/getproduct/census/2011/communityprofile/5GPER?opendocument&navpos=230
 Data source: Australian Bureau of Statistics (ABS).(2011). SSC50668 – Quinns Rocks census community profile. Retrieved from www.censusdata.abs.gov.au/census_services/getproduct/census/2011/communityprofile/SSC50668?opendocument&navpos=220

Source 7: World urban and rural population 1950–2050

Data source: United Nations, Department of Economics and Social Affairs (UN DESA). (2014). World urban and rural population from 1950–2050. Retrieved from <https://esa.un.org/unpd/wup/DataQuery/>



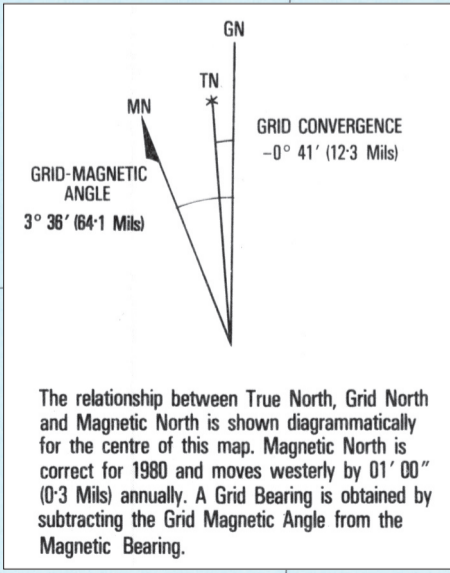
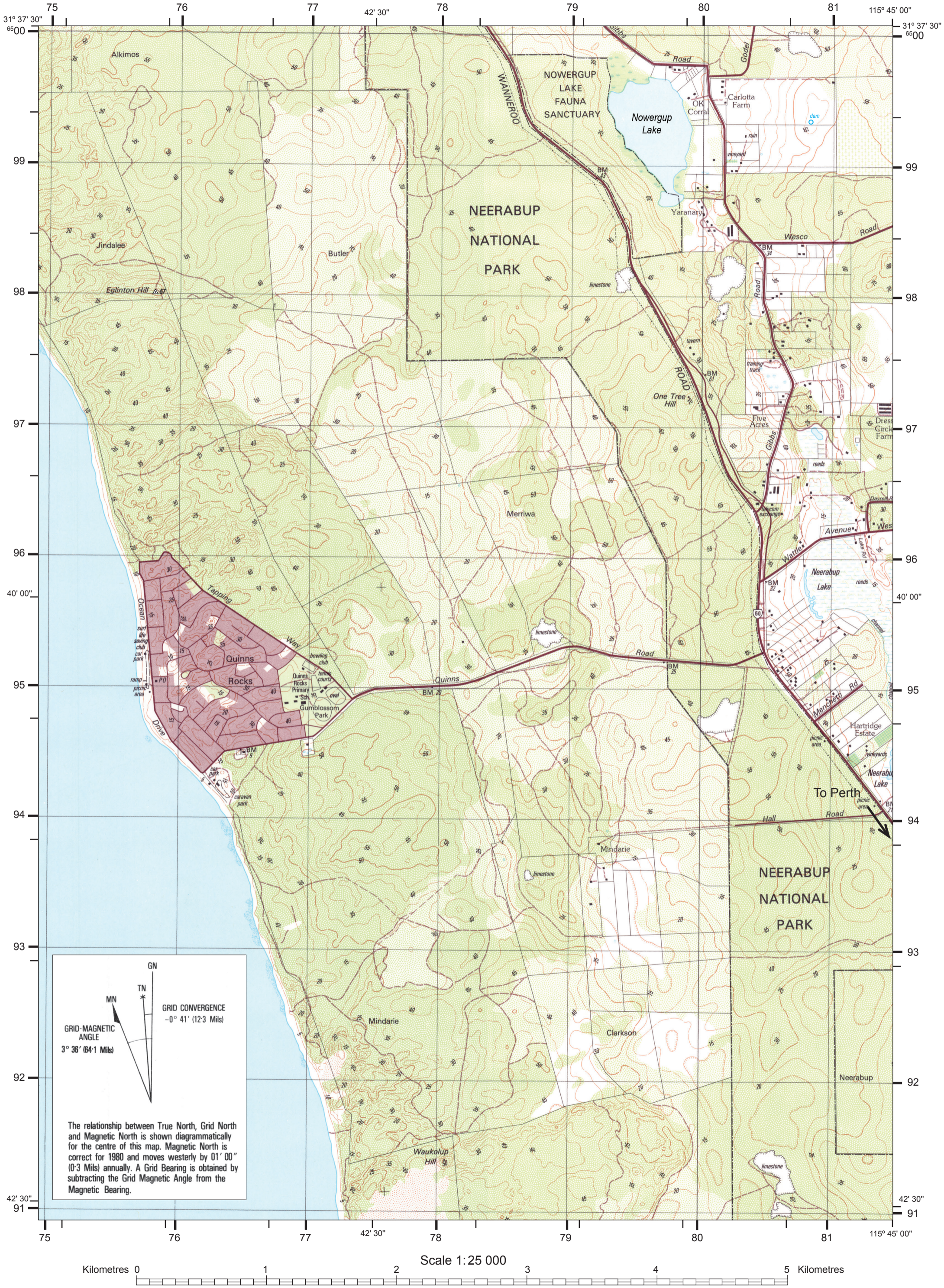
Government of Western Australia
 School Curriculum and Standards Authority



ATAR course examination, 2017
 Geography Broadsheet

Source 1: Quinns Rocks topographic map 1986

Adapted from: Landgate. (1986). *Topographic map Yanchep (2034 IV SE)*.
Midland: Western Australia Land Information Authority.



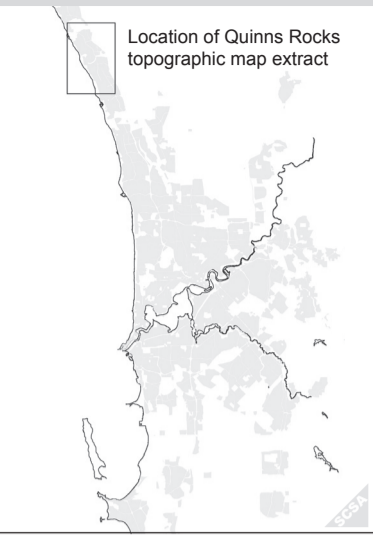
Kilometres 0 1 2 3 4 5 Kilometres

Scale 1:25 000

Legend

CULTURE	
Settlement	
Capital City	PERTH
50 000 and over	LAUN
10 000 to 49 999	Bunbury
2 000 to 9 999	Collie
200 to 1 999 / Suburb	Wagin
Under 200 / Locality	Clackline
Homestead	Mt House
Built-up area	
Buildings	
Buildings ; Ruin ; Church	• ruin †
School ; Police Station ; Hospital	• S • PS • H
Post Office ; Fire Station	• PO • FS
Other Cultural Features	
Landmark area ; object ; Yard	• mast □
Drive-in cinema ; Cemetery ; Mine ; Quarry	□ + ⊗
Telephone line ; Power transmission line	
Roads and Related Features	
Divided highway ; through route	
Sealed road, two or more lanes	
Sealed road, one lane	
Unsealed road, two or more lanes	
Unsealed road, one lane	
Vehicular track	
Restricted access (<i>Use by public may be prohibited</i>)	R
Foot-track ; Footbridge	foot-track
National Hwy; Routes: National; State; Tourist	95 1 41 212
Embankment ; Cutting ; Culvert	
Road bridge ; Gate ; Stock grid	
Fence ; Underpass ; Cul-de-sac	
Railways and Related Features	
Railway multiple track ; single track	
Station ; Light railway ; Crossing	
Railway bridge ; Tunnel	
VEGETATION	
Vegetation dense	
Vegetation medium	
Vegetation scattered	
Distinctive vegetation	jarrah
Distinctive grass	
Secondary growth	
Tropical rainforest	
Mangrove swamp	
Orchard or vineyard ; Pine plantation	
Ricefield	
Windbreak	
Parks and recreation	oval
Contour interval	5 metres
BOUNDARIES	
International	
State or Commonwealth	
Other Administrative	
Prohibited Area	
HYDROGRAPHY	
General	
Perennial watercourse ; lake	
Non-perennial watercourse ; lake	
Channel definite ; indefinite	
Subject to inundation annual ; occasional	
Swamp ; Spring	
Direction of flow arrow ; Waterfall	
Rapids ; Small hydrographic features	pool bore
Dam ; Windmill	
Tank elevated ; non-elevated	
Foreshore and Offshore Features	
Coastline definite ; indefinite	
Saline coastal flat ; Intertidal flat	
Reef, ledge or shoal intertidal ; submerged	
Offshore rock intertidal ; submerged	
Spot depth-metres	25
Submerged linear feature	
Cultural Features Related to Hydrography	
Dam wall / weir ; Lock	
Wharf ; Pier ; Breakwater	
Wreck awash ; submerged	
Dry dock ; Landmark area	
Lighthouse	
Navigational object with light ; without light	
RELIEF	
Contour index ; intermediate	
Contour supplementary ; formline	
Depression contour ; Cliff	
Sand ; Sand dunes ; Floodbank	
Sand ridges ; Distorted surface	
Levee ; Joint or rock fissure	
Small relief feature ; Contour with value	cave 250
CONTROL	
Horizontal control point	
Spot elevation ; Bench Mark with height	225 BM • 26

Metropolitan Perth



Source 3: Intersection of Gibbs and Wesco Roads 2016



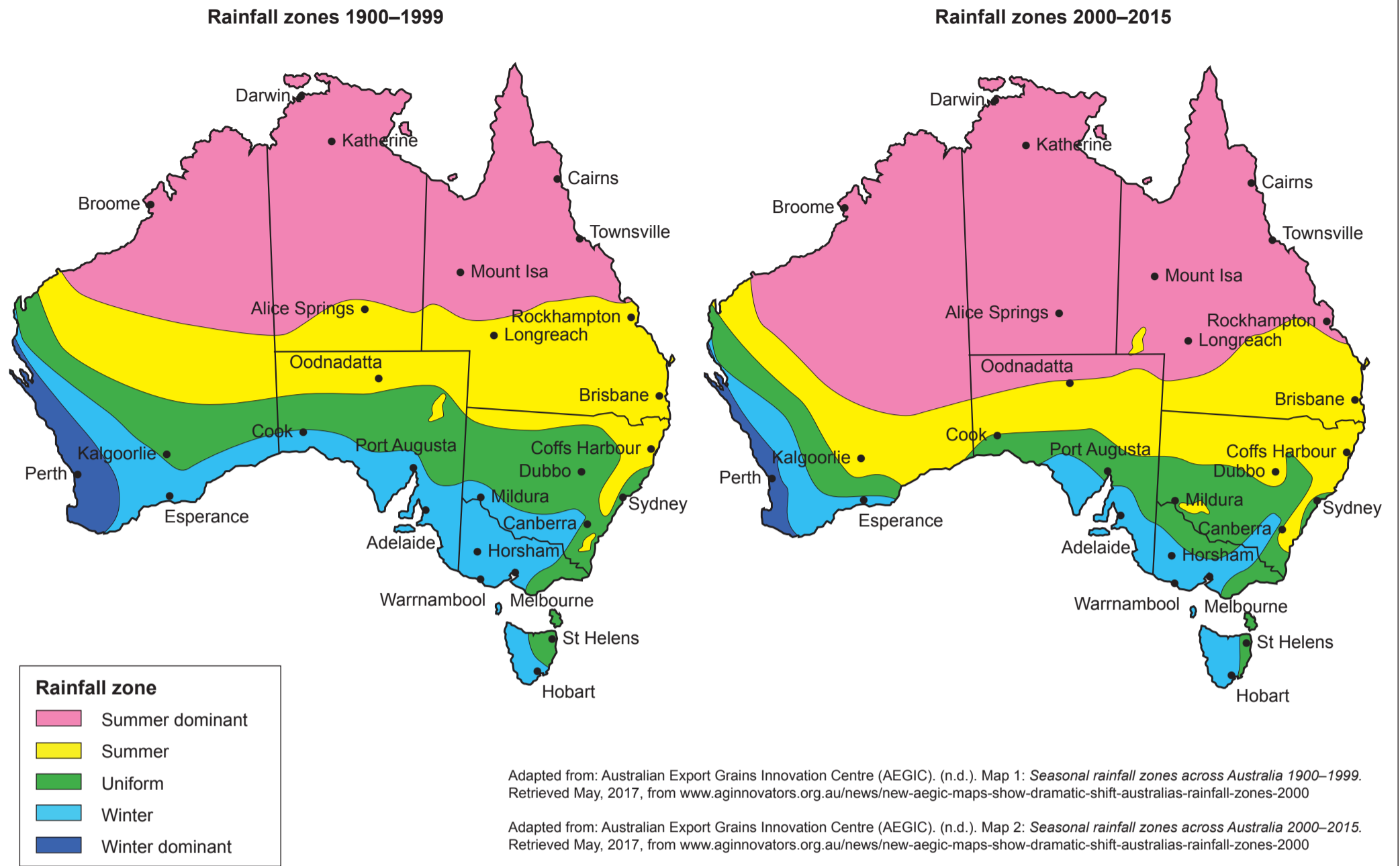
Photograph of intersection of Gibbs and Wesco Roads by courtesy of the examining panel.

Source 2: Quinns Rocks aerial photo 2016

Adapted from: Landgate. (2016). *Quinns Rocks aerial photo 2016*. Midland: Western Australia Land Information Authority.



Source 4: Australia's changing rainfall zones



Source 5: Australia's anthropogenic biomes 1900 and 2000

