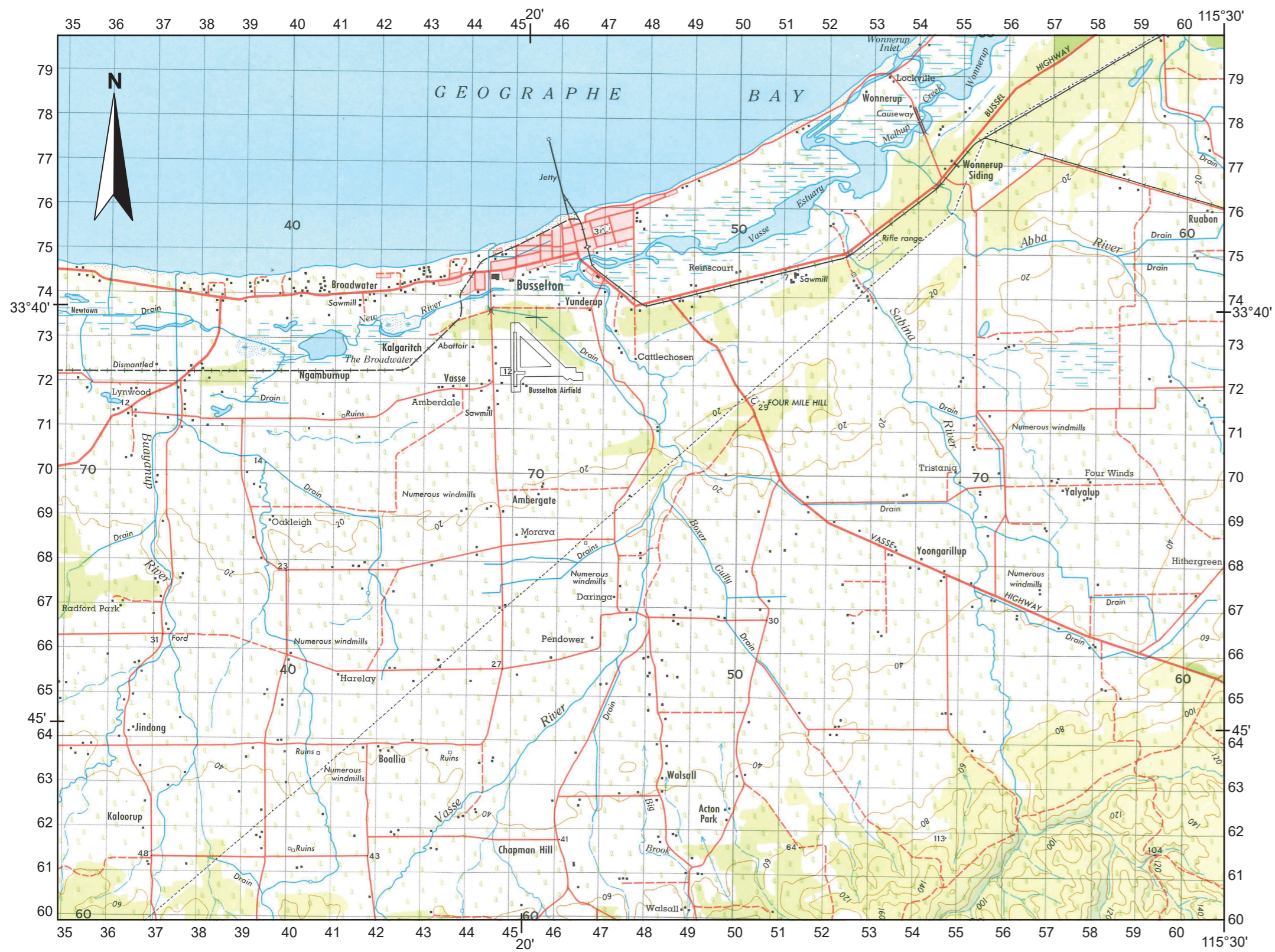
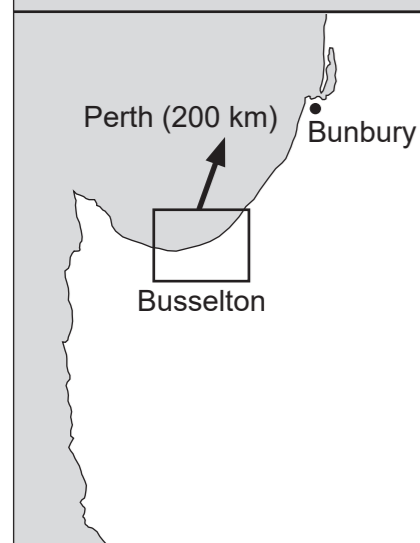


Source 1: Busselton topographic map 1969

Division of National Mapping, (1981). 1930 Busselton Western Australia (1st ed.) (National topographic map series: 1:100 000). Belconnen, ACT: NATMAP.



Location of Busselton



Legend

- Built-up area; National route marker..... [Symbol]
- Principal road and highway; Cutting..... [Symbol]
- Secondary road; Embankment..... [Symbol]
- Minor road; Road bridge..... [Symbol]
- Vehicular track..... [Symbol]
- Gate; Cattle grid..... [Symbol]
- Railway, multiple track; Station; Railway bridge.. [Symbol]
- Railway, single track; Railway tunnel..... [Symbol]
- Light railway or tramway..... [Symbol]
- Power transmission line..... [Symbol]
- Fence; Levee or bank..... [Symbol]
- Mine; Windmill; Yard; Quarry..... [Symbol]
- Building/s; Church; Ruin; Drive-in theatre..... [Symbol]
- Trig station; Bench mark with height; Spot height. Δ. BM306 -220
- Cliff; Contour with value; Depression contour..... [Symbol]
- Sandridges..... [Symbol]
- Forest, dense; medium; scattered..... [Symbol]
- Scrub, dense; medium; scattered..... [Symbol]
- Tropical rainforest; Pine plantation..... [Symbol]
- Orchard, plantation or vineyard; Mangrove..... [Symbol]
- Windbreak..... [Symbol]
- Lake, perennial; Stream, perennial..... [Symbol]
- Lake, intermittent; Stream, intermittent..... [Symbol]
- Lake, mainly dry; Stream, mainly dry..... [Symbol]
- Swamp, perennial; Intermittent..... [Symbol]
- Land subject to inundation; Rice field..... [Symbol]
- Bore or well; Spring; Tank or small dam..... [Symbol]
- Breakwater; Pier; Wharf..... [Symbol]
- Wreck, exposed; Lighthouse..... [Symbol]
- Rock, bare or awash; Foreshore flat; Sand..... [Symbol]
- Reef; Rock ledge; Saline coastal flat..... [Symbol]

SCALE 1 : 100 000



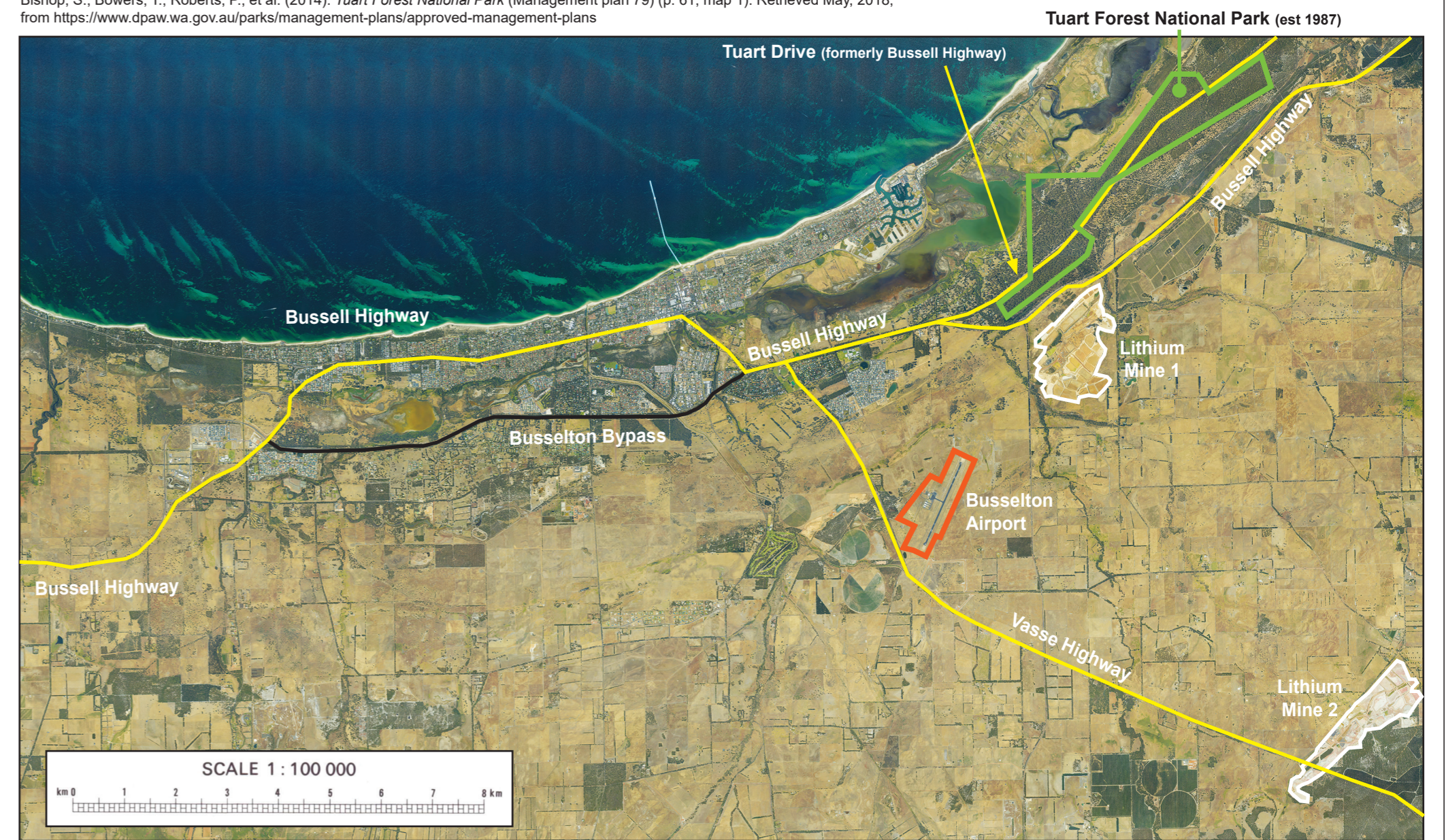
Source 4: Busselton coastline 2016



City of Busselton. (2014). *Leisure and tourism* [Photograph]. Retrieved April, 2018, from <https://www.busselton.wa.gov.au/Leisure-amp-Tourism>

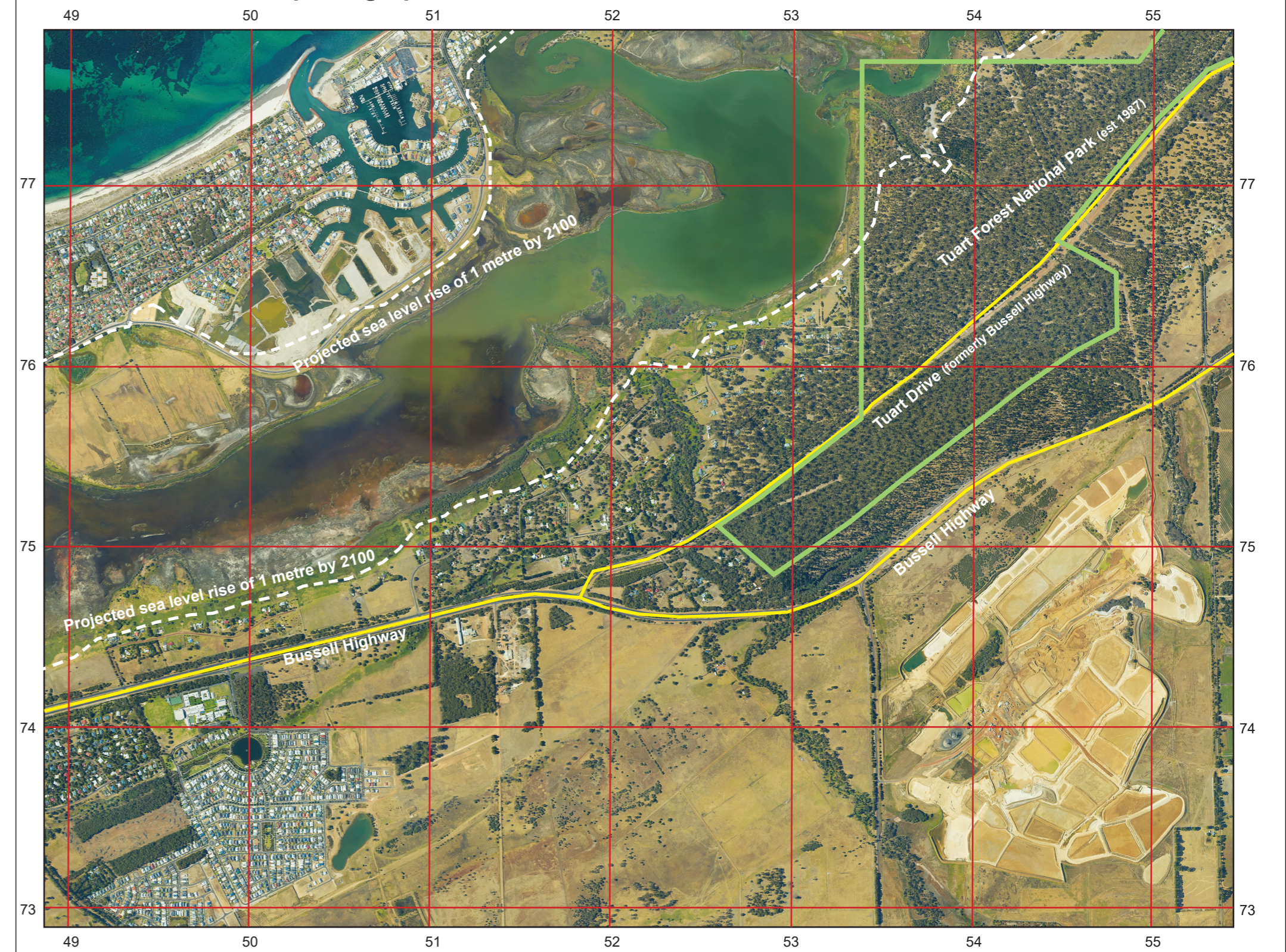
Source 2: Busselton photograph 2016

Adapted from: Landgate. (2017). [2016 Busselton aerial photograph accessed via Map Viewer Plus]. Tuart Forest National Park boundary information from: Bishop, S., Bowers, T., Roberts, P., et al. (2014). *Tuart Forest National Park* (Management plan 79) (p. 61, map 1). Retrieved May, 2018, from <https://www.dpaw.wa.gov.au/parks/management-plans/approved-management-plans>



Source 3: Busselton photograph insert 2016

Adapted from: Landgate. (2017). [2016 Busselton aerial photograph accessed via Map Viewer Plus].

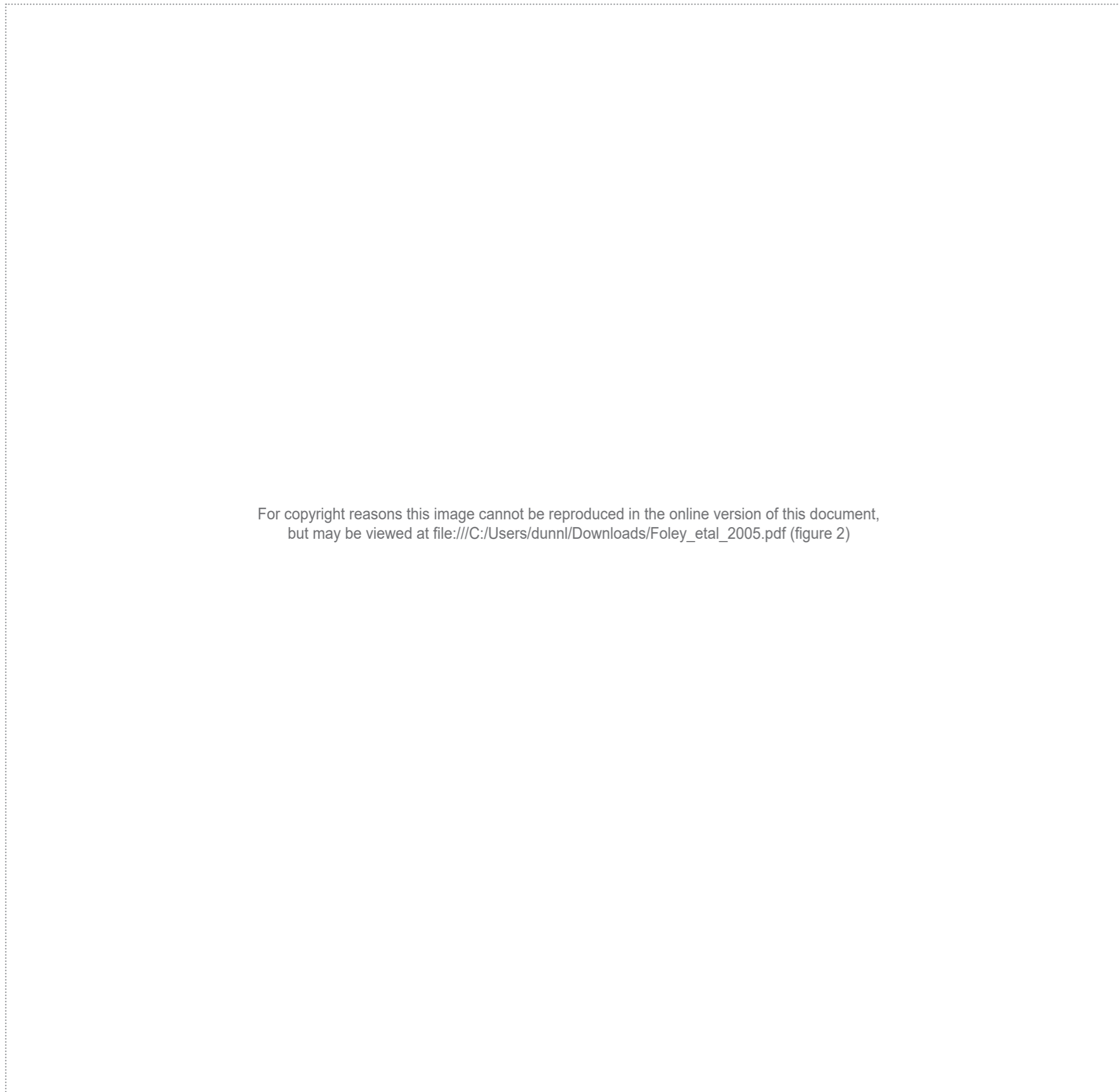


Government of Western Australia
School Curriculum and Standards Authority



ATAR course examination, 2018
Geography Broadsheet

Source 5: World distribution of natural vegetation, croplands, pastures and rangelands

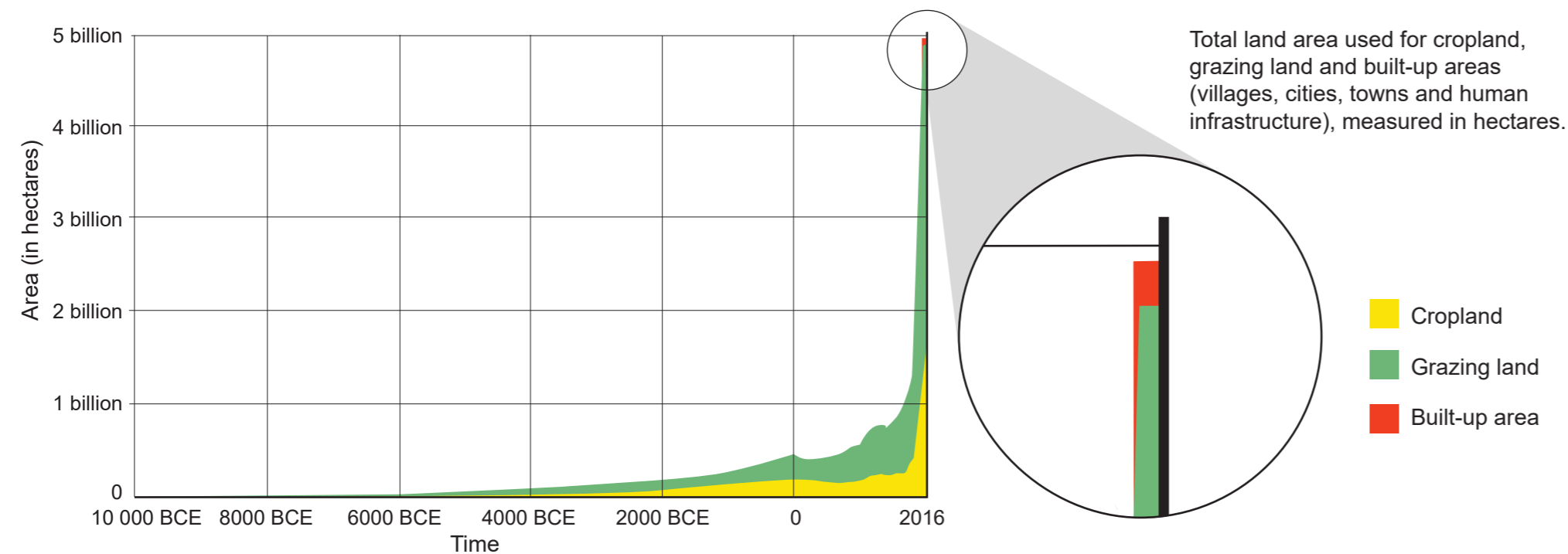


For copyright reasons this image cannot be reproduced in the online version of this document, but may be viewed at file:///C:/Users/dunni/Downloads/Foley_etal_2005.pdf (figure 2)

Foley, J. A., DeFries, R. S., & Asner, G. P., et al. (2005, July 22). Global consequences of land use (Fig. 2). *Science*, 309, p. 572. Retrieved April, 2018, from https://www.researchgate.net/publication/7704227_Global_Consequences_of_Land_Use

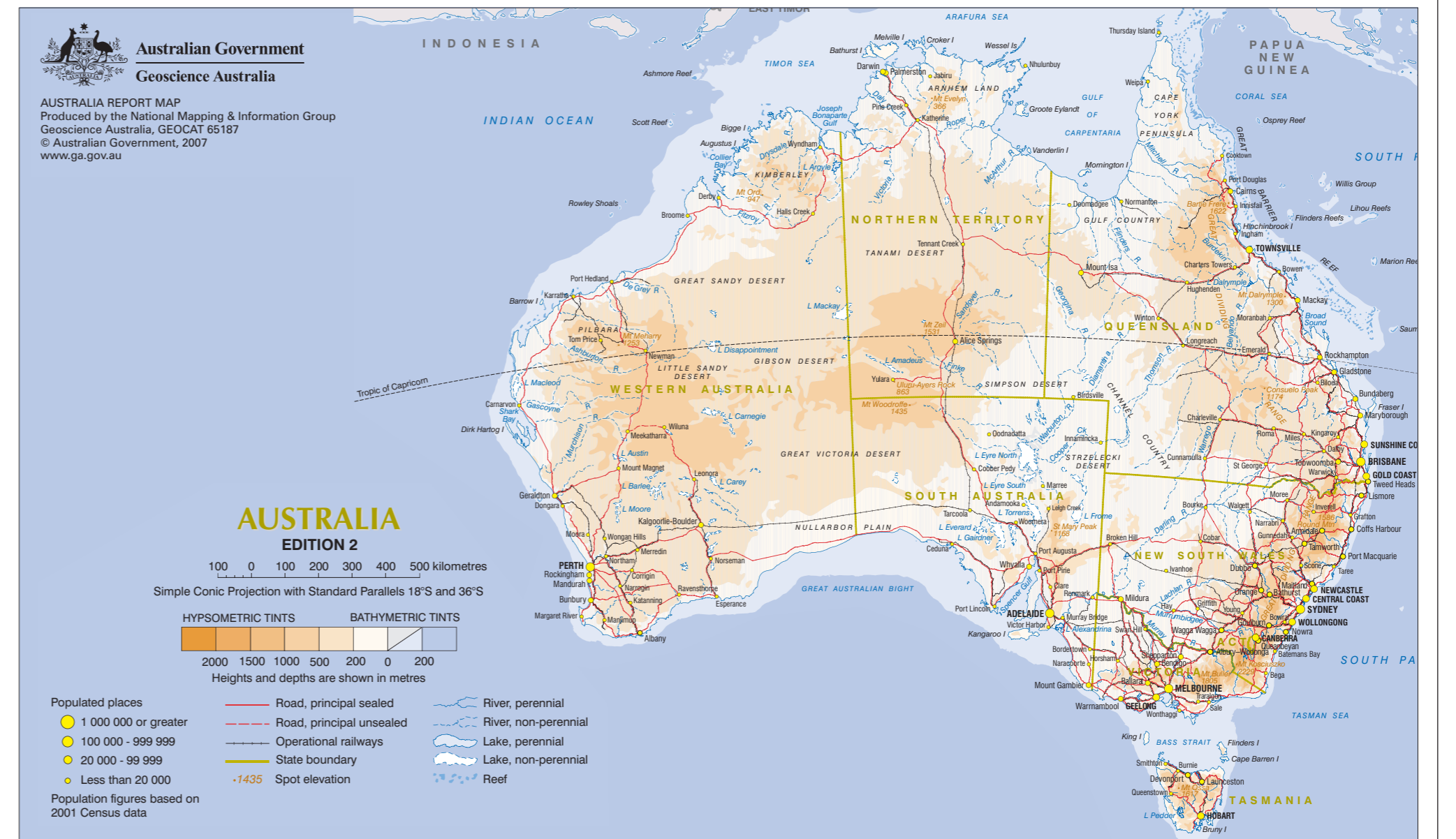
Source 6: World land use over the long-term

Roser, M., & Ritchie, H. (2017). *Land cover* (Land use over long-term, world) [Graph]. Retrieved April, 2018, from <https://ourworldindata.org/land-cover>. Used under Creative Commons Attribution-ShareAlike 4.0 International licence.

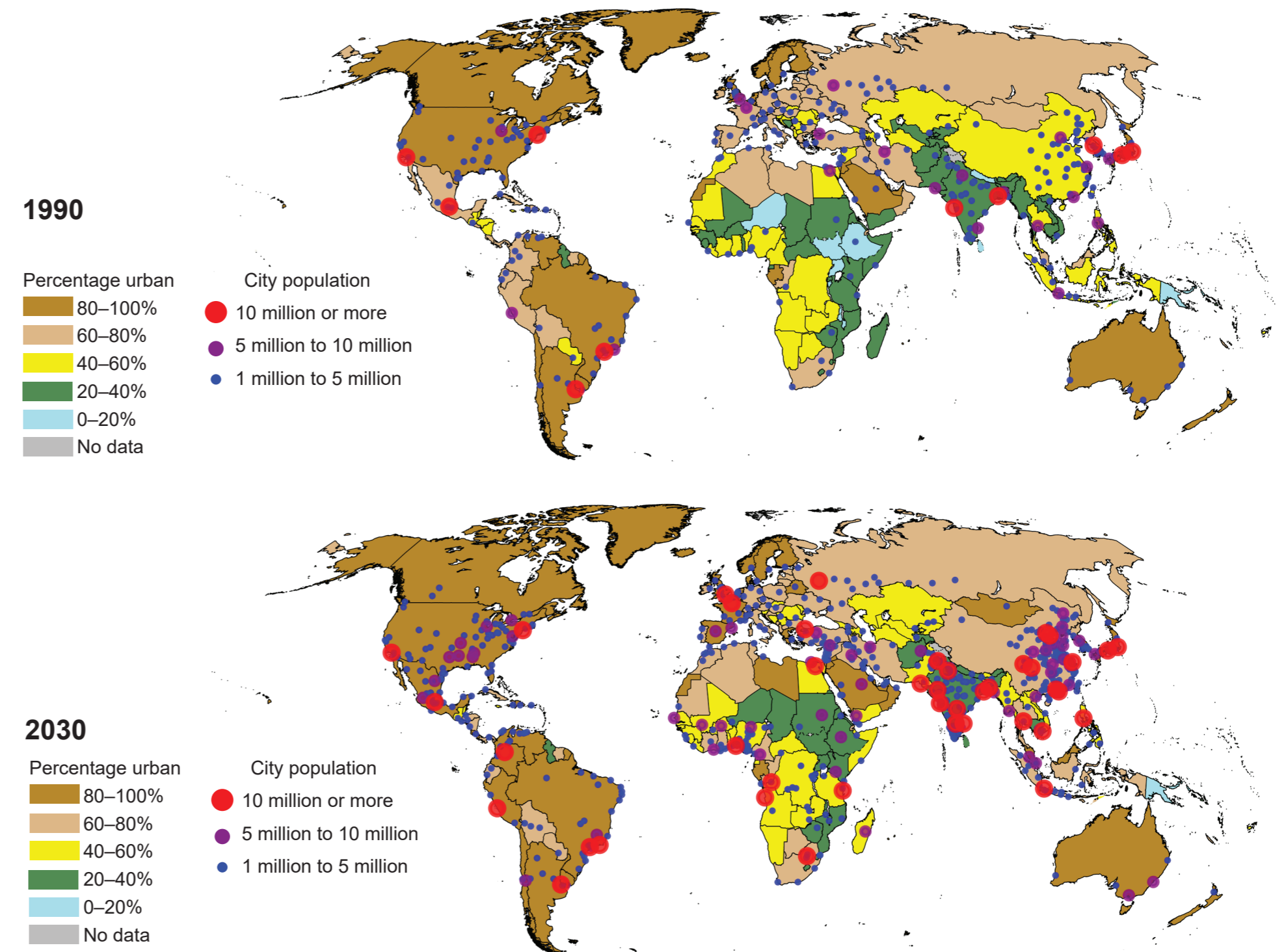


Source 7: Australia

Geoscience Australia. (2007). *Australia* (2nd ed.) (Australia report map: GEOCAT 65187: 1:20 million). Retrieved March, 2018, from <https://ecat.ga.gov.au/geonetwork/srv/eng/search#la05f7892-cf3-7506-e044-0014fdd4fa6>



Source 8: Percentage urban and urban agglomerations by size and class



United Nations. (2014). *World urbanization prospects 2014* (Maps: Percentage urban and urban agglomerations by size class). Retrieved March, 2018, from <https://esa.un.org/unpd/wup/maps/CityDistribution/CityPopulation/CityPop.aspx> Used under Creative Commons Attribution 3.0 IGO licence.