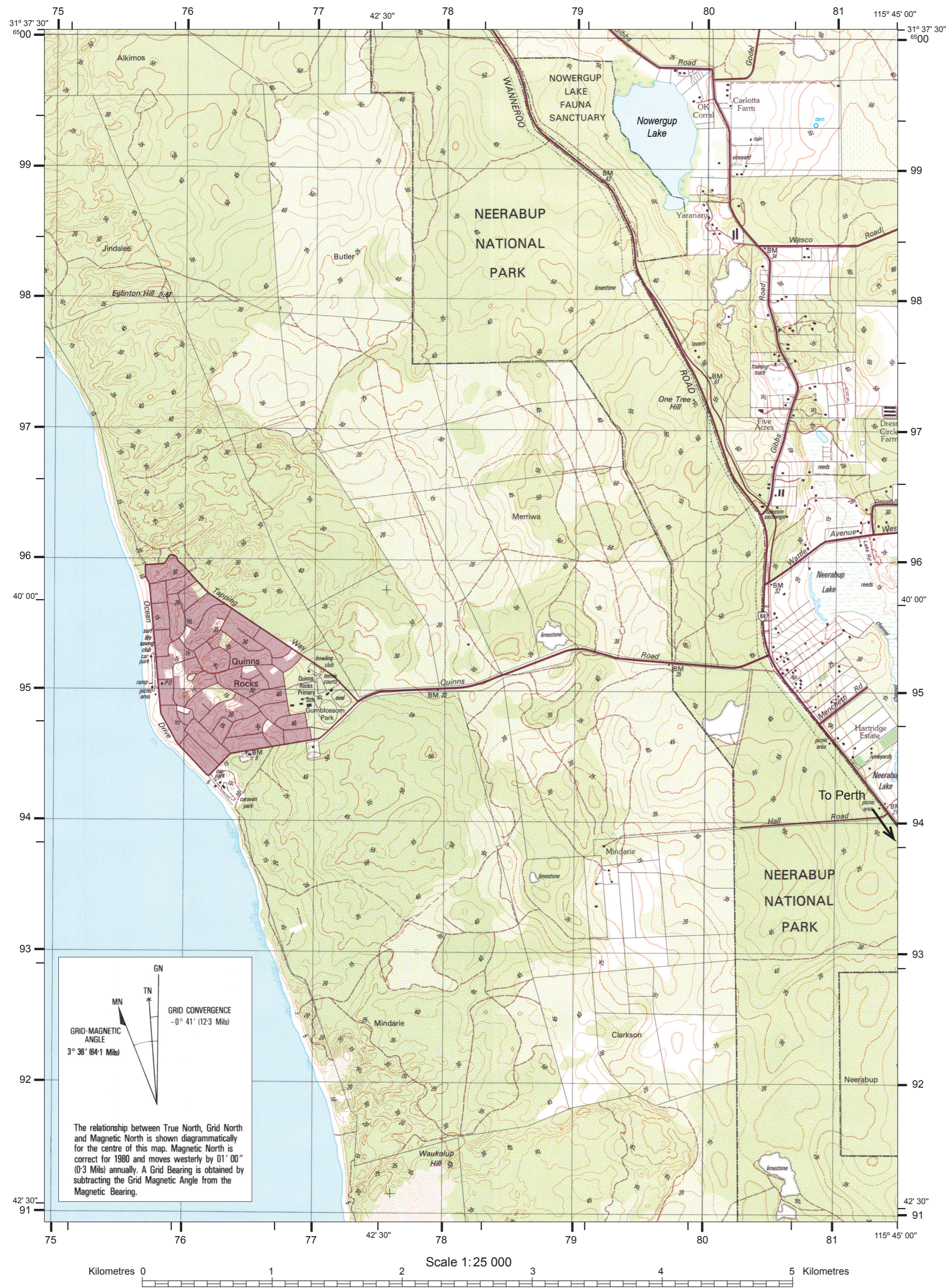


Source 1: Quinns Rocks topographic map 1986

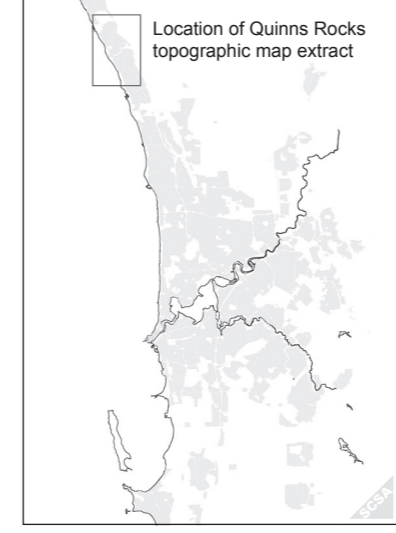
Adapted from: Landgate. (1986). *Topographic map Yanchep (2034 IV SE)*. Midland: Western Australia Land Information Authority.



Legend

CULTURE	
Settlement	
Capital City	PERTH
50 000 and over	LAUN
10 000 to 49 999	Bunbury
2 000 to 9 999	Collie
200 to 1 999 Suburb	Wagin
Under 200 / Locality	Clackline
Homestead	Mt House
Build-up area	
Buildings	
Buildings; Ruin; Church	• ruin • CH
School; Police Station; Hospital	• S • PS • H
Post Office; Fire Station	• PO • FS
Other Cultural Features	
Landmark area; object; Yard	◻ • mast ◻
Drive-in cinema; Cemetery; Mine; Quarry	◻ + ◻
Telephone line; Power transmission line	◻ + ◻
Roads and Related Features	
Divided highway; through route	=====
Sealed road, two or more lanes	=====
Sealed road, one lane	=====
Unsealed road, two or more lanes	=====
Unsealed road, one lane	=====
Vehicular track	-----
Restricted access (Use by public may be prohibited)	-----
Foot track; Footbridge	-----
National Hwy; Routes: National; State; Tourist	=====
Embankment; Cutting; Culvert	=====
Road bridge; Gate; Stock grid	=====
Fence; Underpass; Cul-de-sac	=====
Railways and Related Features	
Railway multiple track; single track	=====
Station; Light railway; Crossing	=====
Railway bridge; Tunnel	=====
VEGETATION	
Vegetation dense	=====
Vegetation medium	=====
Vegetation scattered	=====
Distinctive vegetation	=====
Distinctive grass	=====
Secondary growth	=====
Tropical rainforest	=====
Mangrove swamp	=====
Orchard or vineyard; Pine plantation	=====
Ricefield	=====
Windbreak	=====
Parks and recreation	=====
Contour interval	5 metres
BOUNDARIES	
International	=====
State or Commonwealth	=====
Other Administrative	=====
Prohibited Area	=====
HYDROGRAPHY	
General	
Perennial watercourse; lake	=====
Non-perennial watercourse; lake	=====
Channel definite; indefinite	=====
Subject to inundation annual; occasional	=====
Swamp; Spring	=====
Direction of flow arrow; Waterfall	=====
Rapids; Small hydrographic features	=====
Dam; Windmill	=====
Tank elevated; non-elevated	=====
Foreshore and Offshore Features	
Coastline definite; indefinite	=====
Saline coastal flat; Intertidal flat	=====
Reef, ledge or shoal intertidal; submerged	=====
Offshore rock intertidal; submerged	=====
Spot depth-metres	=====
Submerged linear feature	=====
Cultural Features Related to Hydrography	
Dam wall / weir; Lock	=====
Wharf; Pier; Breakwater	=====
Wreck awash; submerged	=====
Dry dock; Landmark area	=====
Lighthouse	=====
Navigational object with light; without light	=====
RELIEF	
Contour index; intermediate	=====
Contour supplementary; formline	=====
Depression contour; Cliff	=====
Sand; Sand dunes; Floodbank	=====
Sand ridges; Distorted surface	=====
Levee; Joint or rock fissure	=====
Small relief feature; Contour with value	=====
CONTROL	
Horizontal control point	=====
Spot elevation; Bench Mark with height	=====

Metropolitan Perth



Source 3: Intersection of Gibbs and Wesco Roads 2016



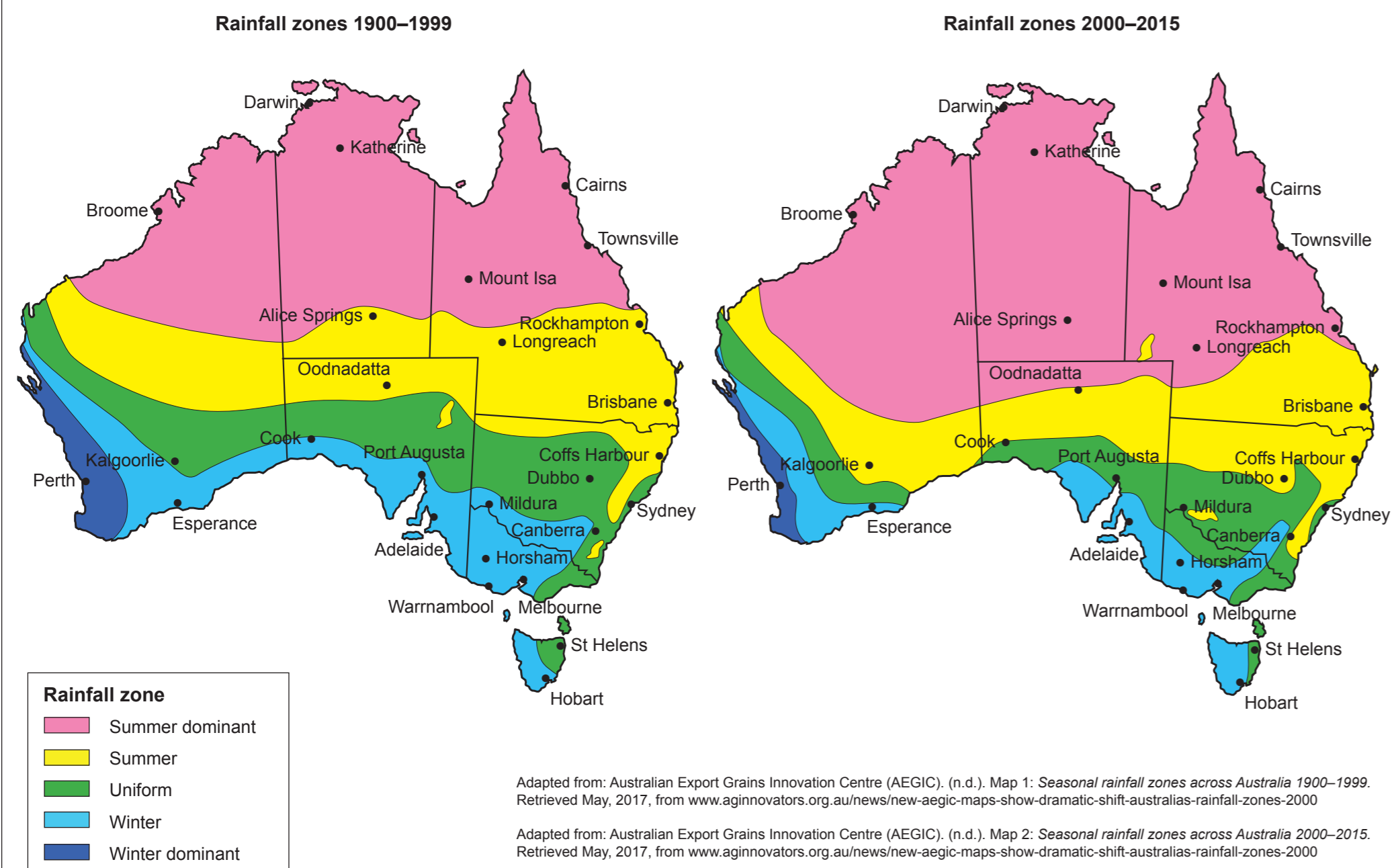
Photograph of intersection of Gibbs and Wesco Roads by courtesy of the examining panel.

Source 2: Quinns Rocks aerial photo 2016 Adapted from: Landgate. (2016). *Quinns Rocks aerial photo 2016*. Midland: Western Australia Land Information Authority.

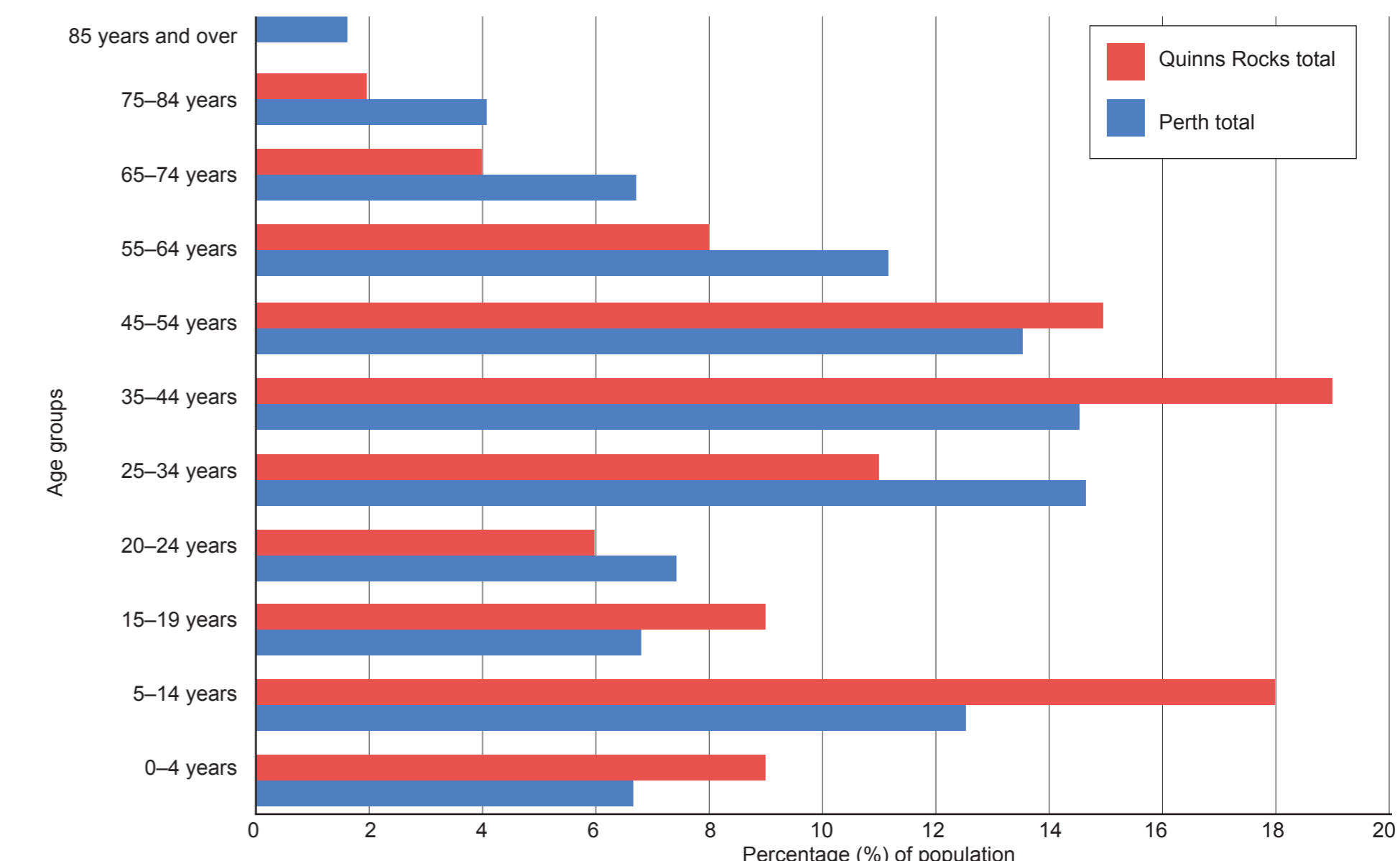


SCALE 1:30 000

Source 4: Australia's changing rainfall zones



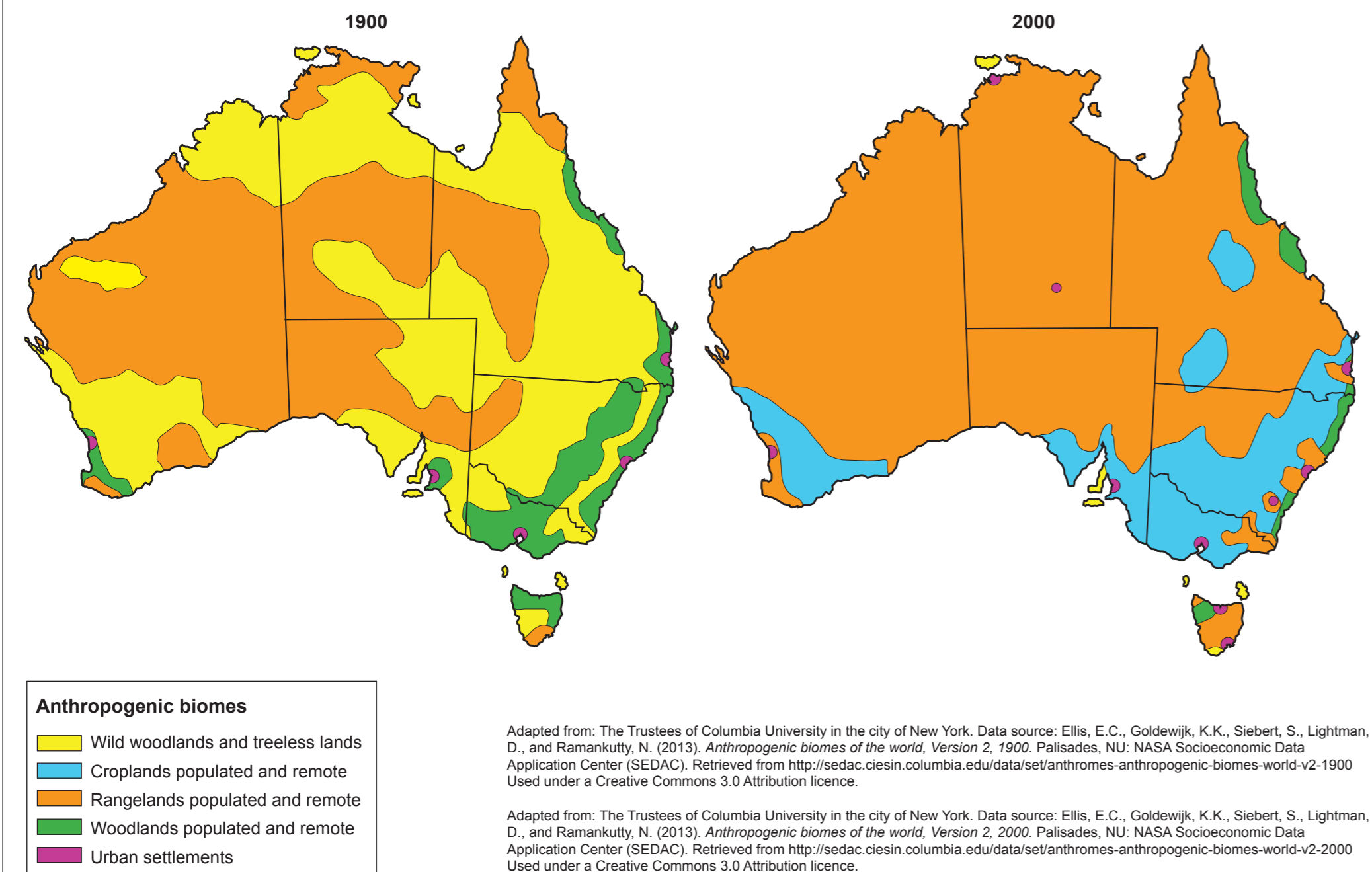
Source 6: Demographic characteristics of Quinns Rocks and Perth Metropolitan Area



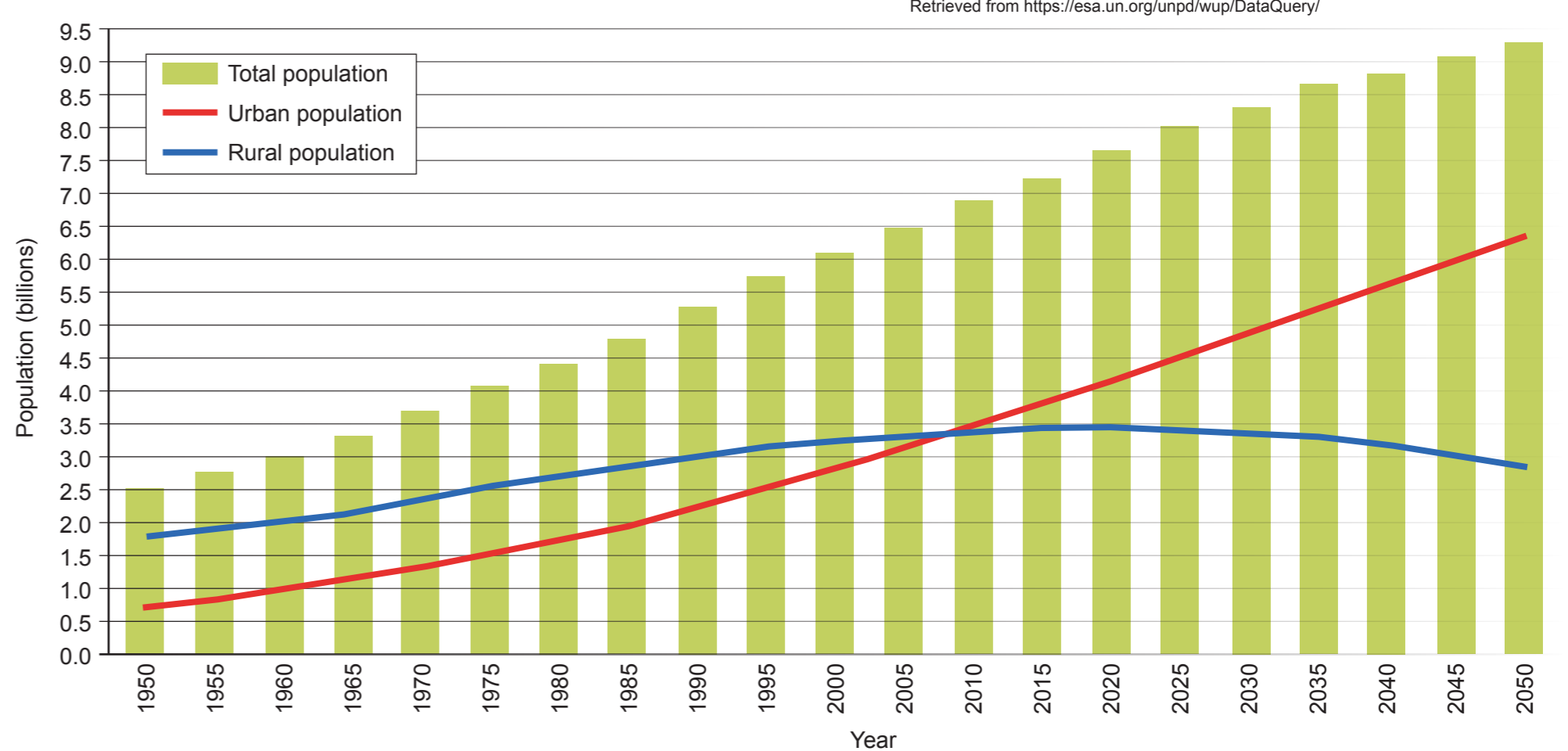
Data source: Australian Bureau of Statistics (ABS), (2011). *5GPER – Greater Perth census community profile*. Retrieved from www.censusdata.abs.gov.au/census_services/getproduct/census/2011/communityprofile/5GPER?opendocument&navpos=230

Data source: Australian Bureau of Statistics (ABS), (2011). *SSC50668 – Quinns Rocks census community profile*. Retrieved from www.censusdata.abs.gov.au/census_services/getproduct/census/2011/communityprofile/SSC50668?opendocument&navpos=220

Source 5: Australia's anthropogenic biomes 1900 and 2000



Source 7: World urban and rural population 1950–2050



Data source: United Nations, Department of Economics and Social Affairs (UN DESA), (2014). *World urban and rural population from 1950–2050*. Retrieved from <https://esa.un.org/unpd/wup/DataQuery/>



Government of Western Australia
School Curriculum and Standards Authority



ATAR course examination, 2017
Geography Broadsheet