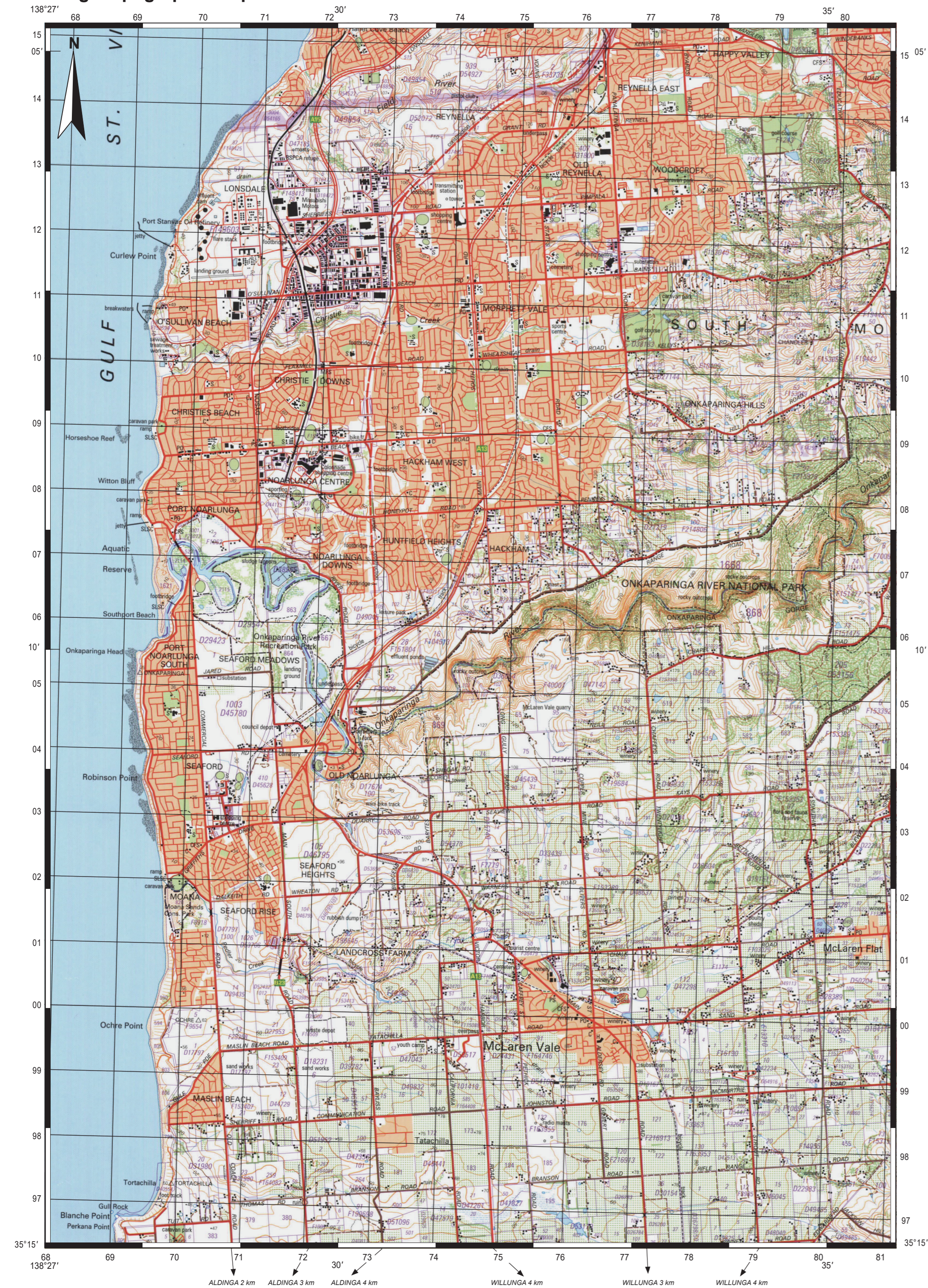


**Source 1: Noarlunga topographic map 2001**

Adapted from: Department for Environment and Water, the Government of South Australia. (2001). *Noarlunga South Australia* (4th ed.) [Topographic map: 1:50 000]. Retrieved March, 2019, from <https://www.environment.sa.gov.au/>... Legend adapted from: Department of Lands, the Government of South Australia. (1989). *Hawker South Australia* (2nd ed.) [Topographic map: 1:50 000]. SA: Department of Environment and Heritage.



**Source 2: Noarlunga aerial photograph 2017**

Adapted from: DigitalGlobe. (2017, October 15). [Noarlunga aerial photograph accessed via Google Earth Pro].



**Source 3: Maslin Beach ground photograph 2019**

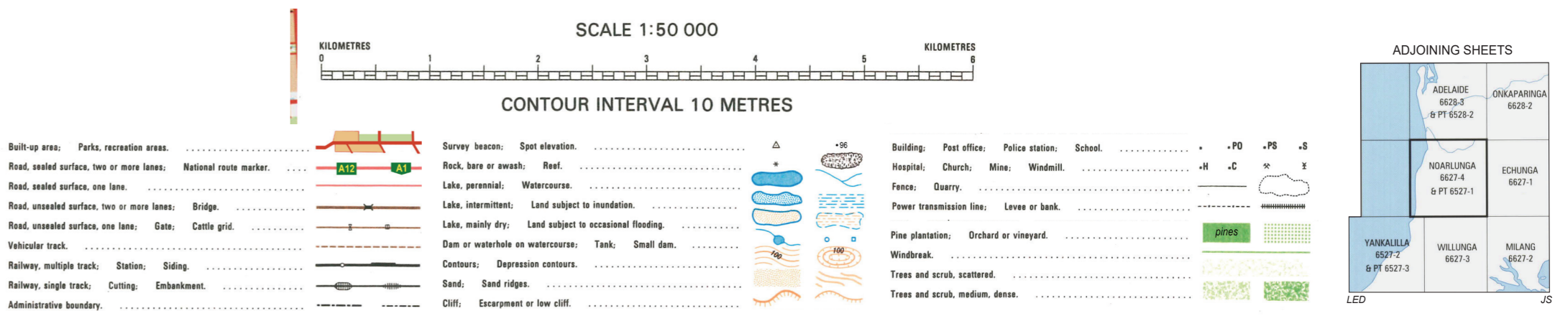


Maslin Beach ground photograph by courtesy member of examining panel.

**Source 4: Old Noarlunga ground photograph 2019**



Old Noarlunga ground photograph by courtesy member of examining panel.



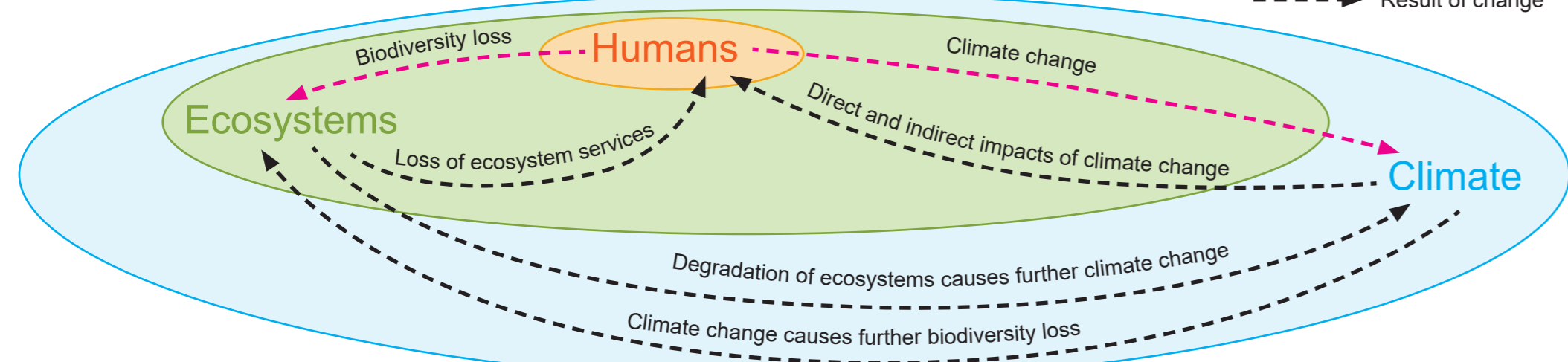
**Government of Western Australia  
School Curriculum and Standards Authority**



**ATAR course examination, 2019  
Geography Broadsheet**

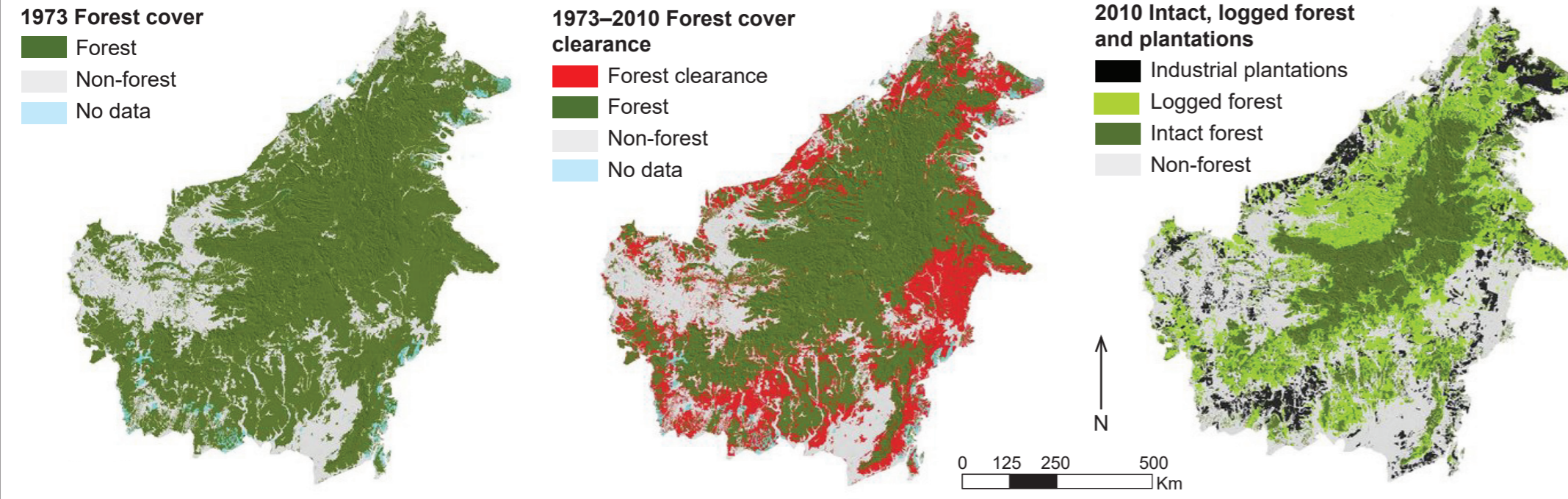


**Source 5: The results of change due to human activity on ecosystems and climate**



Adapted from: Zari, M. P. (2014). Ecosystem services analysis in response to biodiversity loss caused by the built environment. *S.A.P.I.EN.S.* 7 (No. 1), p. 9, fig. 3. Retrieved May, 2019, from <https://journals.openedition.org/sapiens/1684>. Used under Creative Commons Attribution 3.0 Licence

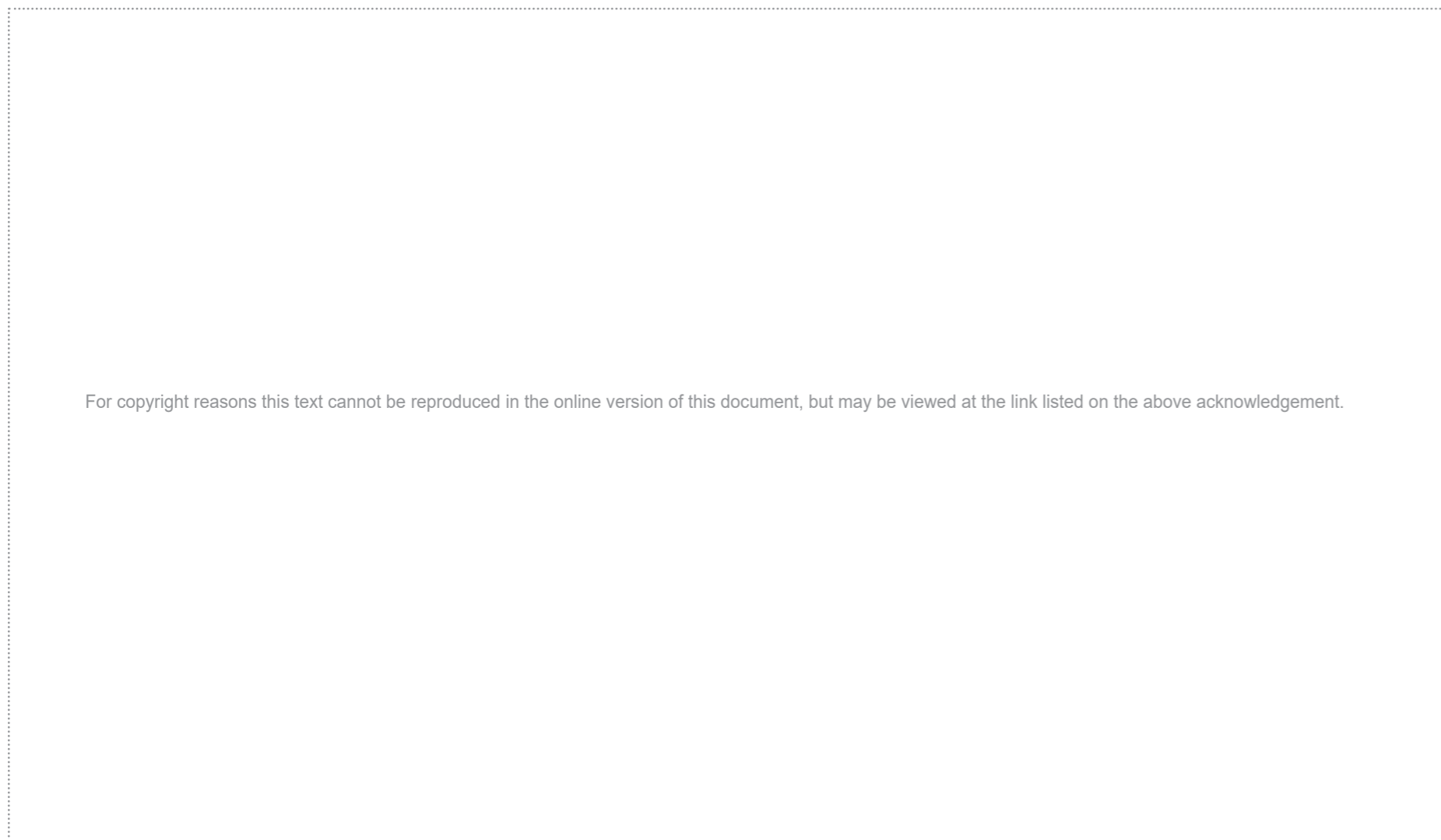
**Source 6: Satellite image of forest cover clearance, Borneo (Indonesia and Malaysia) 1973–2010**



Adapted from: Gaveau, D., Sloan, S., Molitena, E., et al. (2014, July). Four decades of forest [...]. *PLoS ONE*. 9 (7), p. 6, fig. 3. Retrieved May, 2019, from <https://www.researchgate.net/publication/263972689>. Used under Creative Commons Attribution 4.0 International Licence

**Source 7: The growth of worldwide rural and urban population 1960–2016**

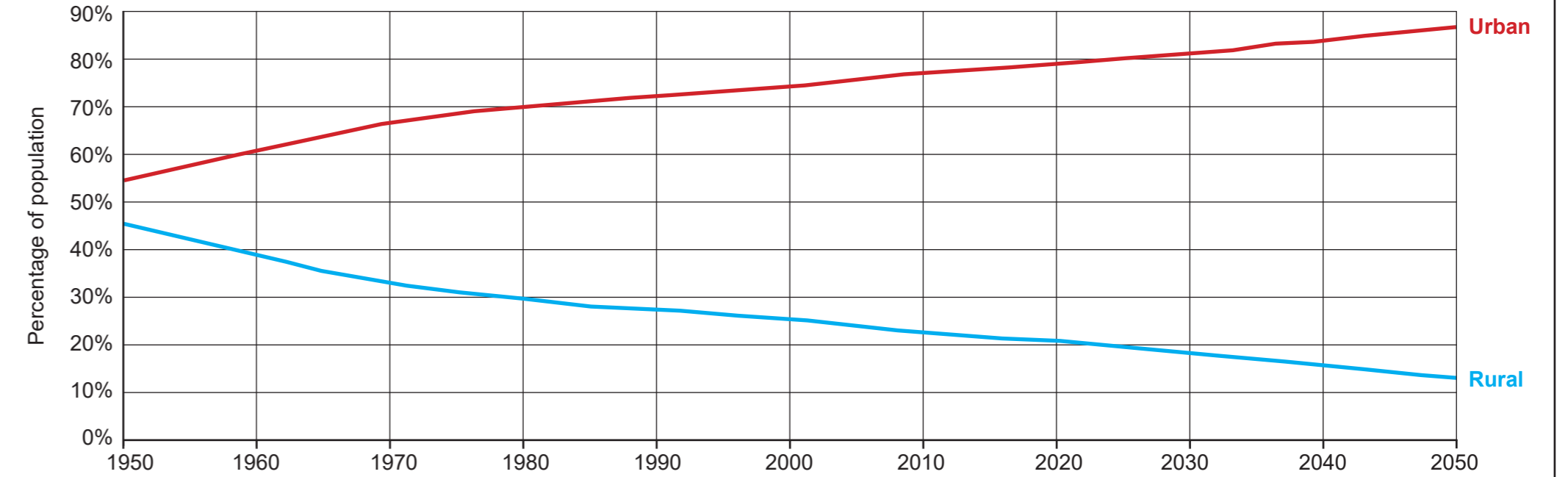
Adapted from: Cinnéide, D. (2019). *Where do people live worldwide? 1960 – 2016*. Retrieved May, 2019, from <https://public.tableau.com/profile/docinsight#vizhome/TheRiseoftheCity/Dashboard1>



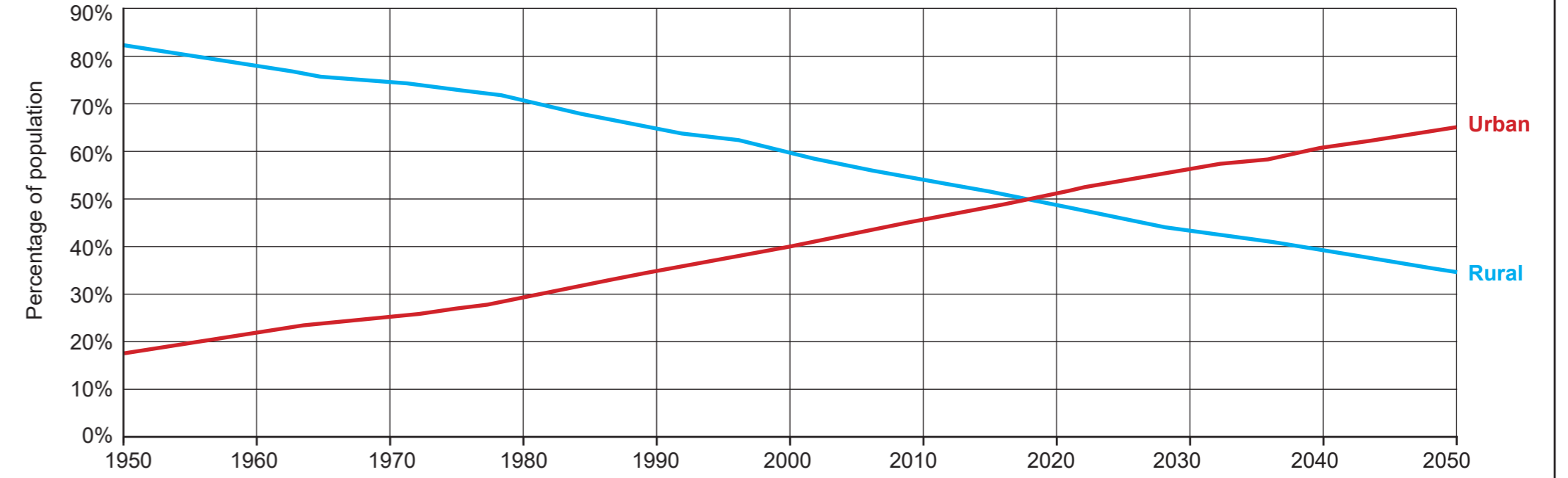
**Source 8: Do more people live in urban or rural areas?**

Adapted from: Ghosh, I. (2018). *Do more people live in urban or rural areas?* [Interactive chart]. Retrieved May, 2019, from <https://www.visualcapitalist.com/>. Used under Creative Commons Attribution 4.0 International Public Licence

**More developed regions**



**Less developed regions**



**Source 9: Age and sex distribution (%) capital cities and rest of Australia, June 2006 and June 2017**

Top graph adapted from: Australian Bureau of Statistics. (2008). *Age and sex distribution [...]* 2006 [Graph]. Retrieved May, 2019, from <http://www.abs.gov.au/>. Used under Creative Commons Attribution 4.0 International Licence. Bottom graph adapted from: Australian Bureau of Statistics. (2018). *Age and sex distribution [...]* 2017 [Graph]. Retrieved May, 2019, from <http://www.abs.gov.au/>. Used under Creative Commons Attribution 4.0 International Licence

