

Source 1: Townsville topographic map 2021

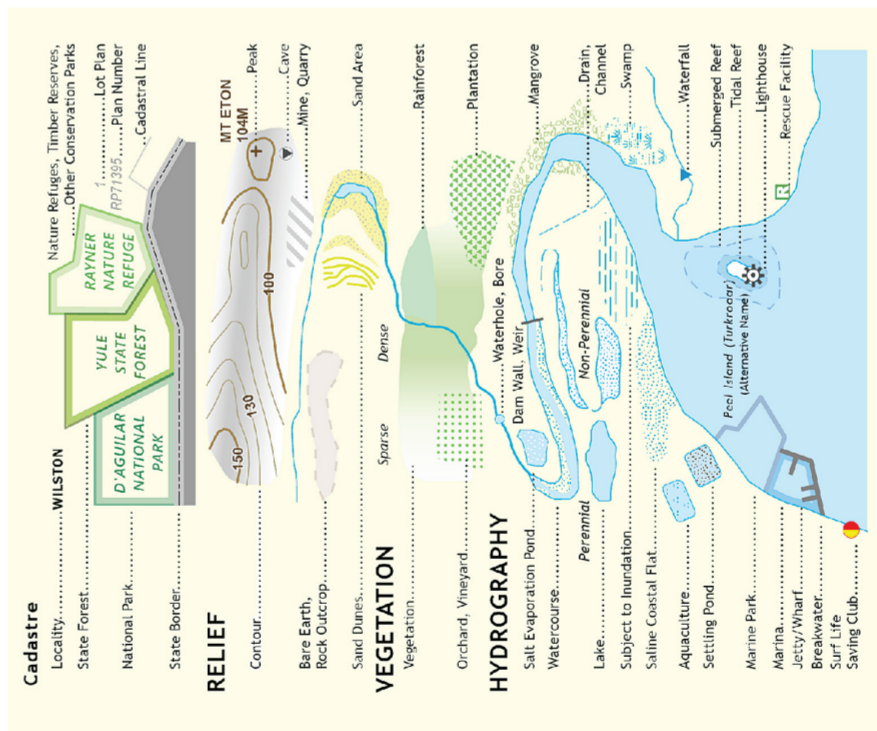
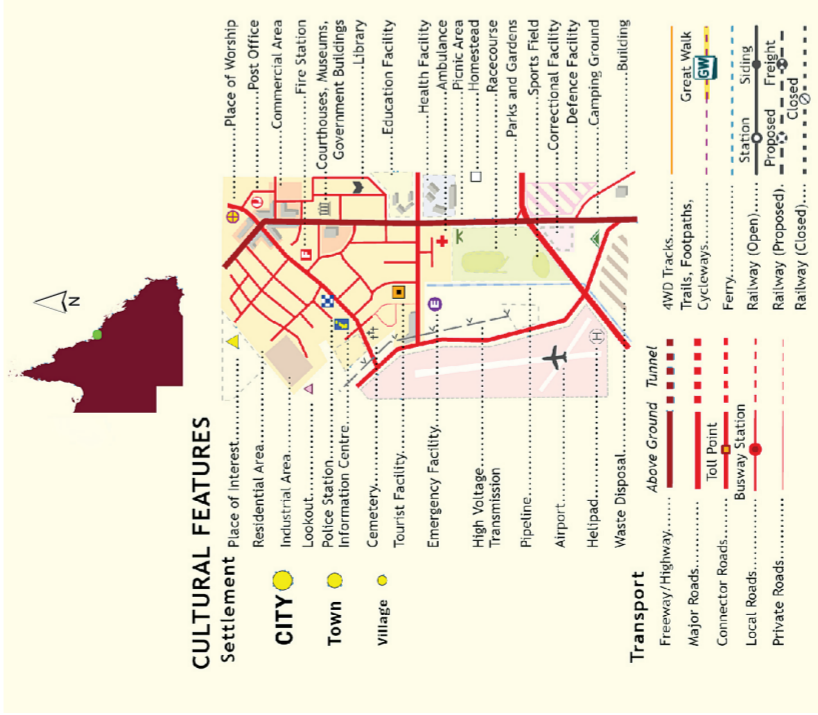
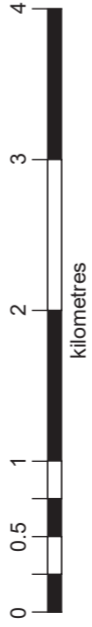


Adapted from: State of Queensland. (2021). [Townsville digital 1:50000 topographic map]. Retrieved May, 2023, from <https://dtpo.information.qld.gov.au/> Used under a Creative Commons Attribution 4.0 International licence.

2023/74137

**Key**

Scale 1:50,000

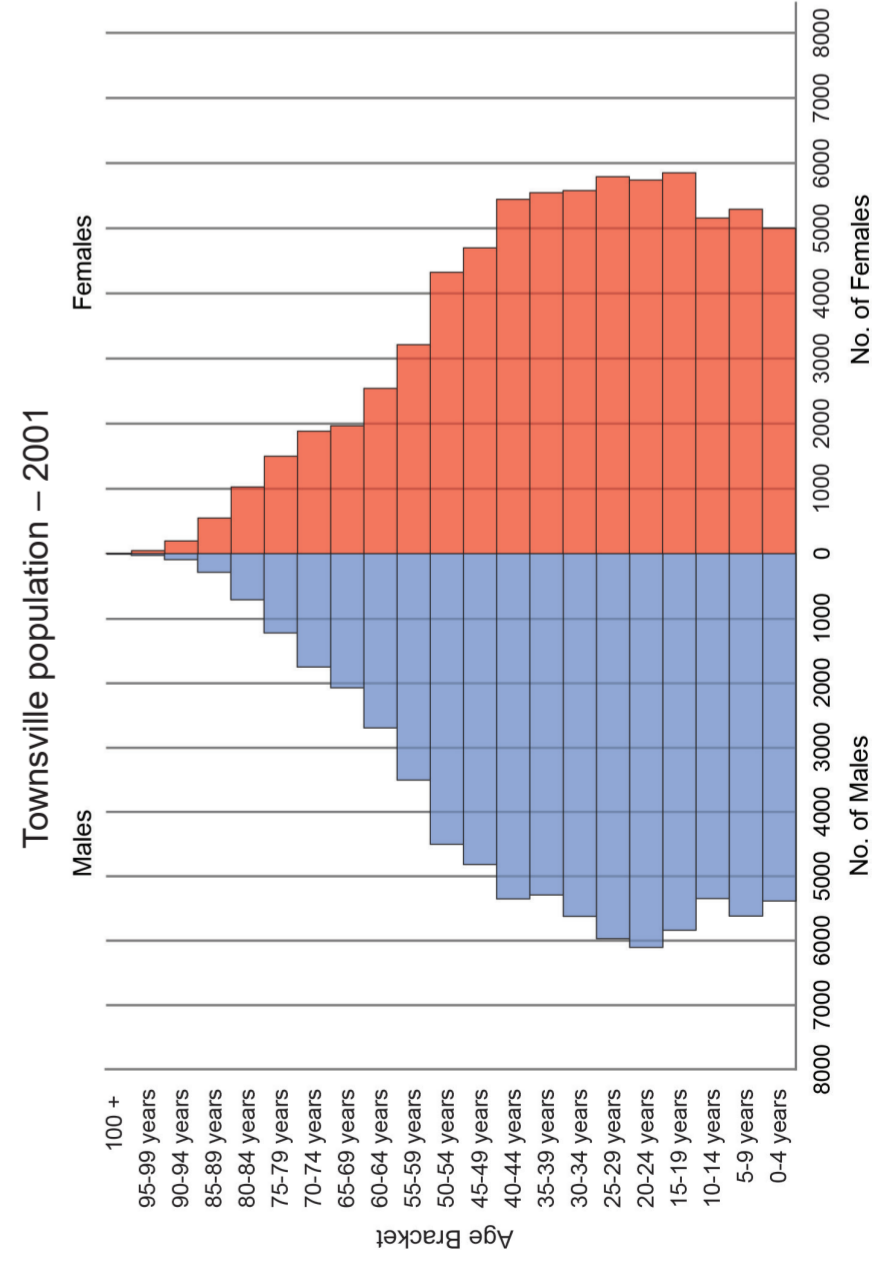


Source 2: Townsville Central Business District photograph 2005

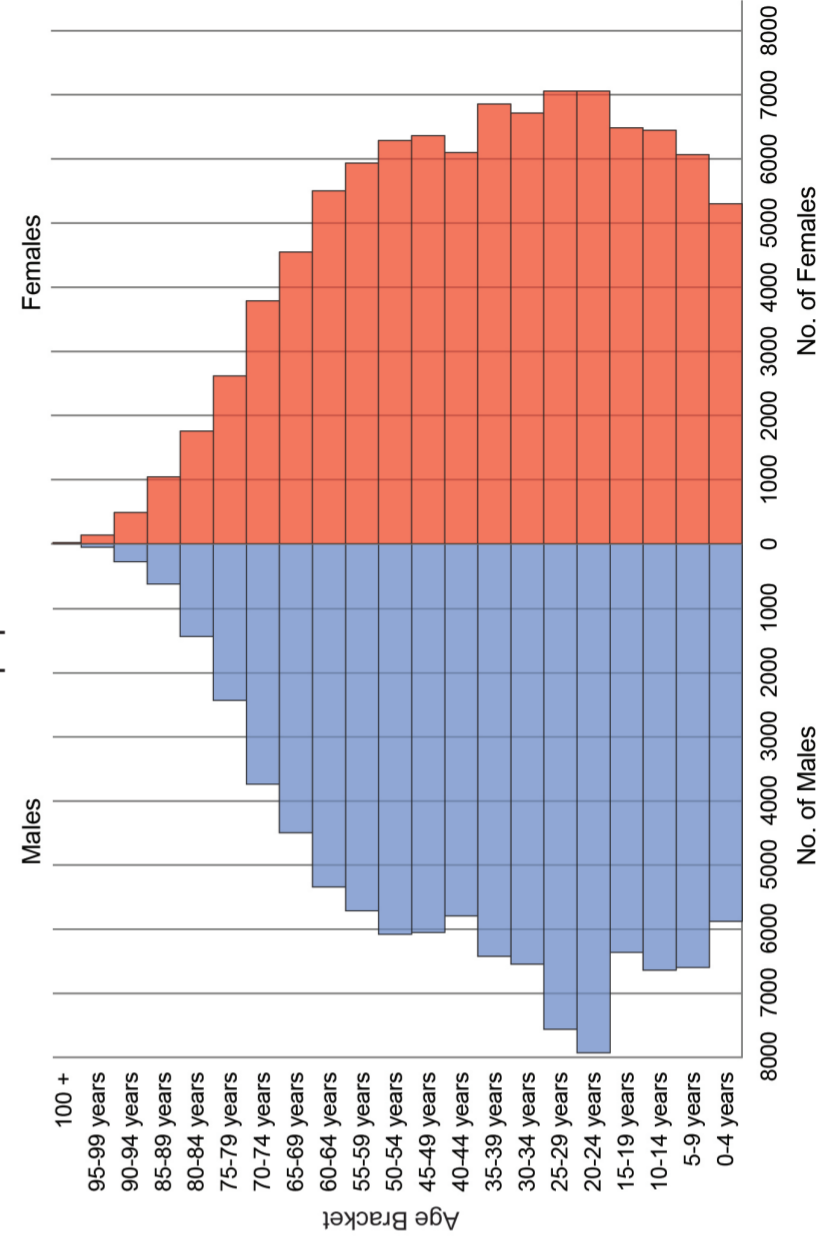


Zuñiga, D. (2005). Townsville (Photograph). Retrieved May, 2023, from [https://commons.wikimedia.org/wiki/File:Aerial\\_view\\_of\\_Townsville.jpg](https://commons.wikimedia.org/wiki/File:Aerial_view_of_Townsville.jpg)

Source 3: Townsville population pyramids 2001 and 2021



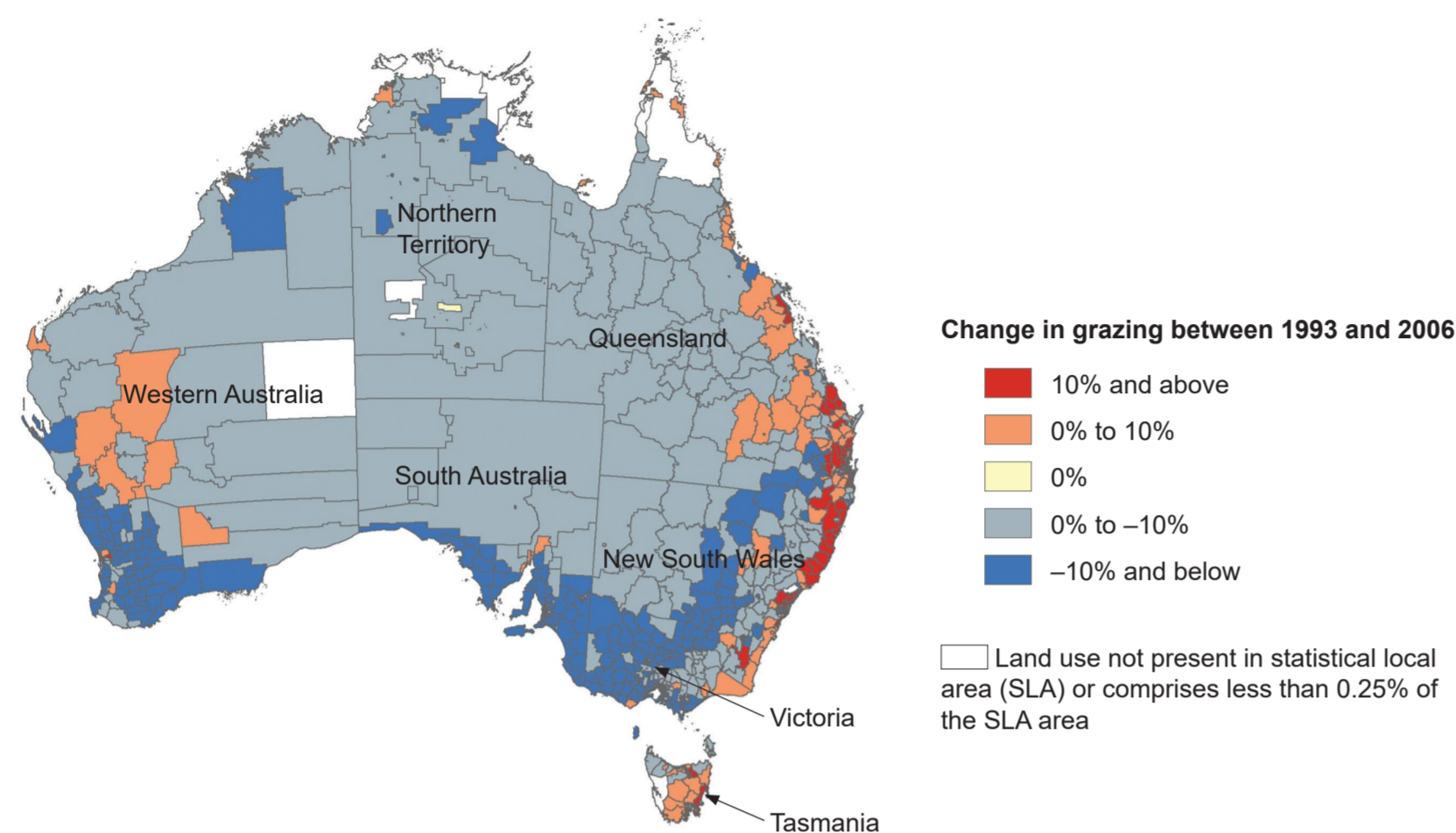
Townsville population – 2021



Data retrieved May, 2023 from: Australian Bureau of Statistics. (2001). 2001 Census Community Profiles (Thuringowa C). <https://www.abs.gov.au/census/indicators-and-data/2001/LGA37000> and Townsville (C). <https://www.abs.gov.au/census/indicators-and-data/community-profiles/2001/LGA37000> Used under a Creative Commons Attribution 4.0 International license.

Data retrieved May, 2023. Australian Bureau of Statistics. (2021). Townsville 2021 Census Community Profiles from <https://www.abs.gov.au/census/indicators-and-data/community-profiles/2021/LGA37010> Used under a Creative Commons Attribution 4.0 International license.

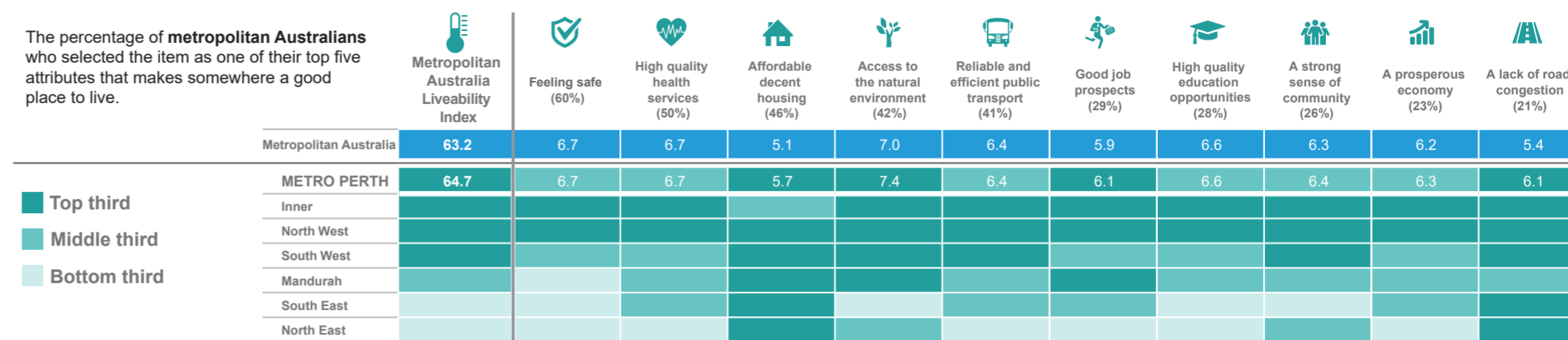
Source 4a: Change in the area used for grazing between 1992–93 and 2005–06 in Australia



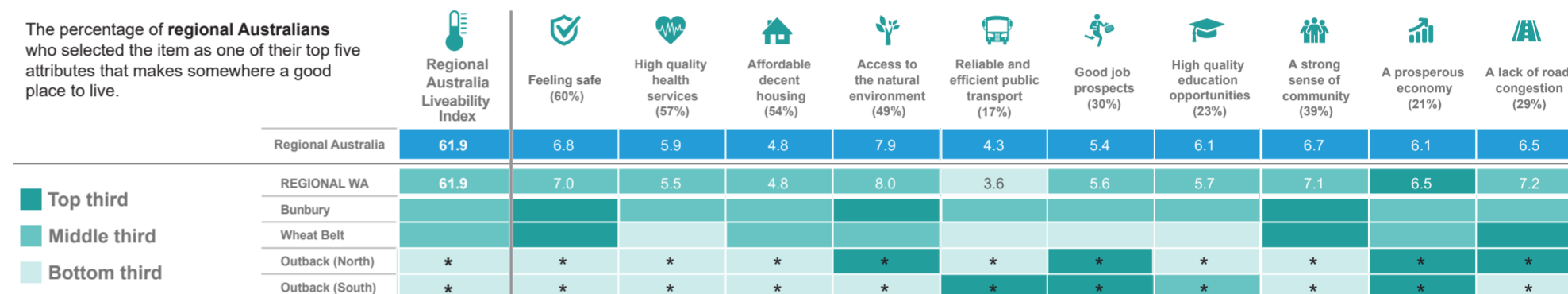
Adapted from: Mewett, J., Paplinska, J., Kelley, G., et al. (2013, October). Map s1 change in the area used for grazing between 1992–93 and 2005–06. *Towards National Reporting on Agricultural Land Use Change in Australia* (p. 2). Retrieved May, 2023, from chrome-extension://efaidnbnmnibpcapcgclefndmka/https://daff.ent.sirsidyntix.net.au/client/en\_AU/search/asset/1027355/0 Used under a Creative Commons Attribution 3.0 Australia Licence.

Source 5: Liveability in metropolitan and regional Australia and Western Australia 2022

Liveability factors: Metropolitan Australia and Western Australia 2022



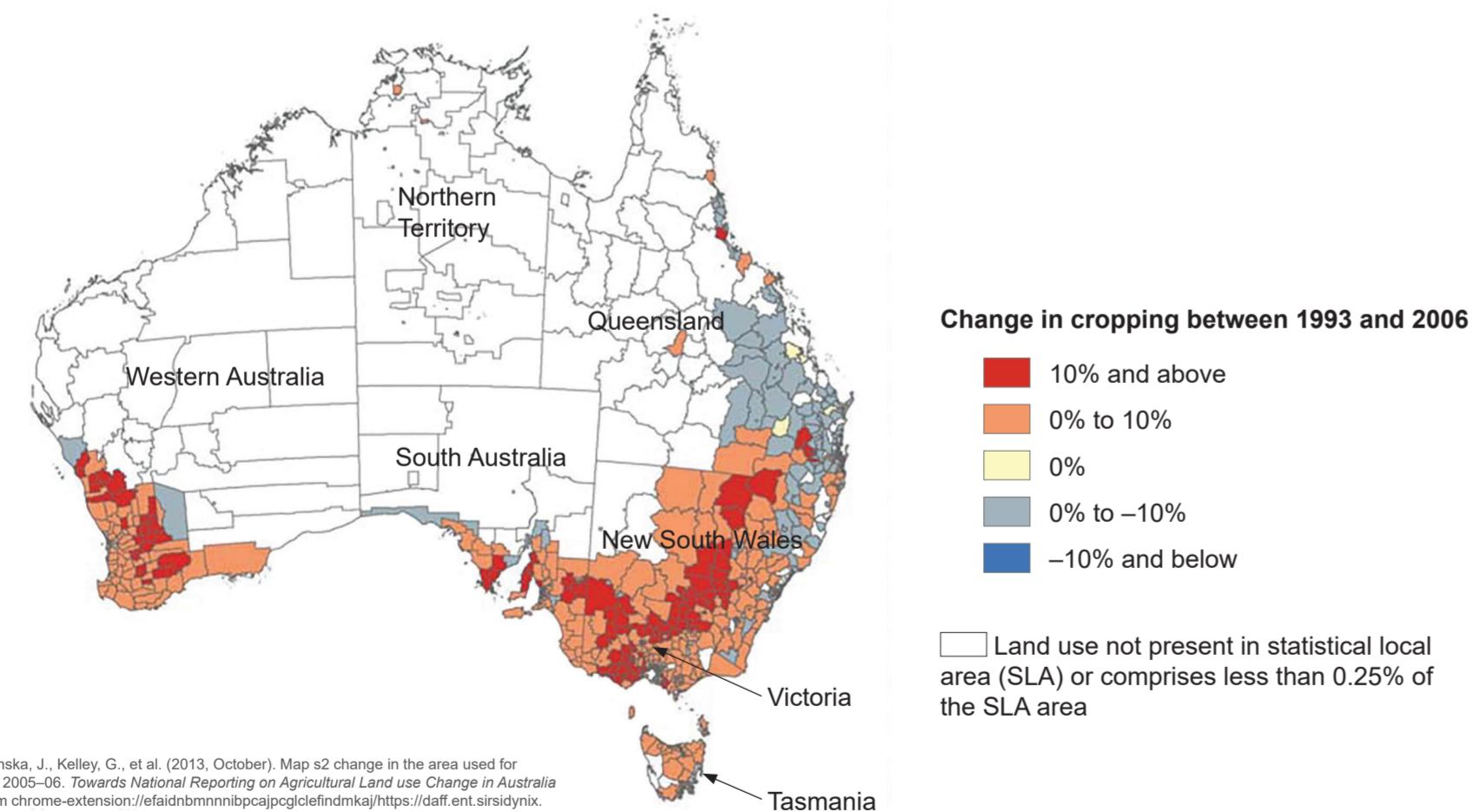
Liveability factors: Regional Australia and Western Australia 2022



- Note:
- Data presented represents community values with regard to liveability and what residents believe makes somewhere a good place to live.
  - Numbers indicate how Australians rated their local areas' performance against each attribute on a scale between 0 and 10.
  - Liveability Index is a measure of liveability between 0 and 100 calculated using all liveability factors.
  - Areas have been ranked on each liveability factor and split into thirds with colour coding indicating whether they fall into the top third, middle third or bottom third when compared to the remainder of Australia.
  - \* Small sample size, n= <25. Interpret the results with caution.

Adapted tables and notes retrieved May, 2023 from: Ipsos. (2022). *Life in Australia 2022: Understanding Liveability Across Metropolitan Australia*. [https://www.ipsos.com/sites/default/files/ct/publication/documents/2022-07/Life%20in%20Metro%20Australia%202022\\_FINAL.pdf](https://www.ipsos.com/sites/default/files/ct/publication/documents/2022-07/Life%20in%20Metro%20Australia%202022_FINAL.pdf) and *Life in Australia 2022: Understanding Liveability Across Regional Australia*. [https://www.ipsos.com/sites/default/files/ct/publication/documents/2022-07/Life%20in%20Regional%20Australia%202022\\_FINAL.pdf](https://www.ipsos.com/sites/default/files/ct/publication/documents/2022-07/Life%20in%20Regional%20Australia%202022_FINAL.pdf)

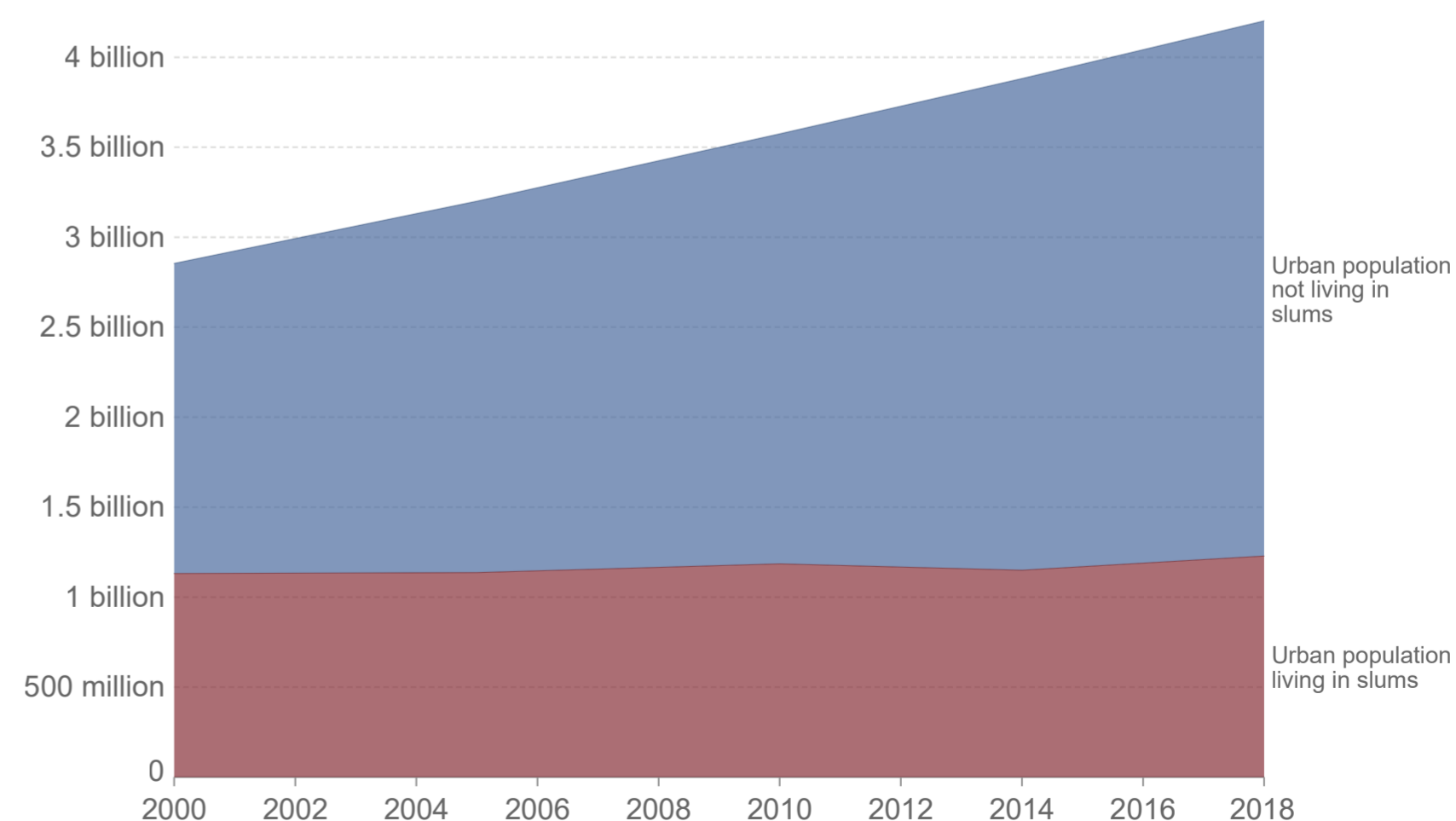
Source 4b: Change in the area used for cropping between 1992–93 and 2005–06 in Australia



Adapted from: Mewett, J., Paplinska, J., Kelley, G., et al. (2013, October). Map s2 change in the area used for cropping between 1992–93 and 2005–06. *Towards National Reporting on Agricultural Land Use Change in Australia* (p. 2). Retrieved May, 2023, from chrome-extension://efaidnbnmnibpcapcgclefndmka/https://daff.ent.sirsidyntix.net.au/client/en\_AU/search/asset/1027355/0 Used under a Creative Commons Attribution 3.0 Australia Licence.

Source 6: Number of people living in urban slum households, World, 2000 to 2018

A slum household is defined as a group of individuals living under the same roof lacking one or more of the following conditions: access to improved water, access to improved sanitation, sufficient living area, housing durability, and security of tenure.



Our World in Data. (2022). *Number of People Living in Urban Slum Households, World, 2000 to 2018* [Graph]. Retrieved May, 2023, from <https://ourworldindata.org/urbanization#numbers-living-in-urban-slums> Used under a Creative Commons Attribution 4.0 International licence.