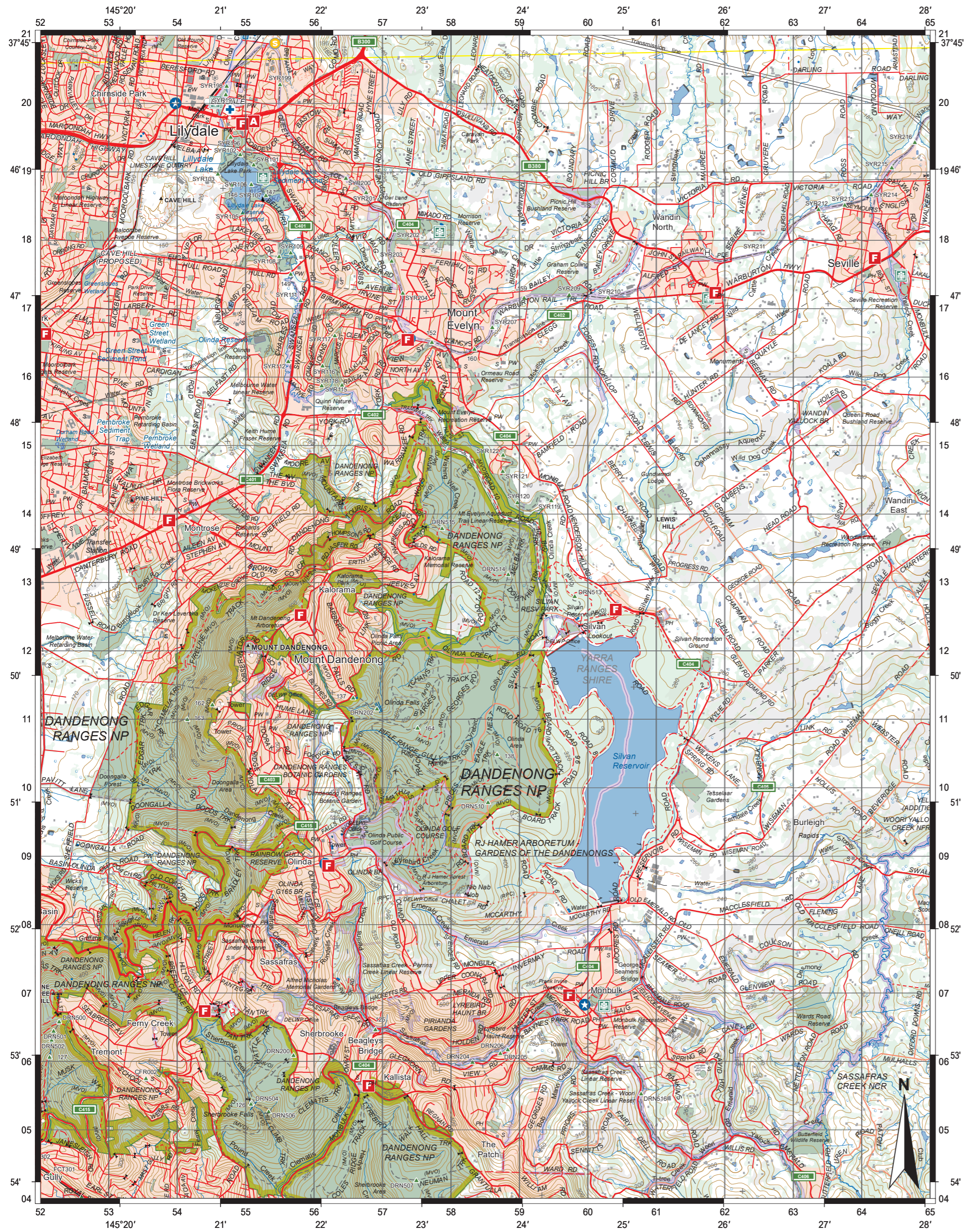


Source 1: Lilydale topographic map 2019



State of Victoria (Department of Environment, Land, Water and Planning). (n.d.). [Lilydale topographic map]. Retrieved December, 2020, from <https://vicmaptopo.land.vic.gov.au/#/discover-map>

Contour Interval 20 metres

Scale 1:50 000



Source 2: Lilydale aerial photograph 2006



DigitalGlobe. (2006). [Lilydale aerial photograph]. Retrieved December, 2020, from Google Earth Pro.

Source 3: Lilydale aerial photograph 2018

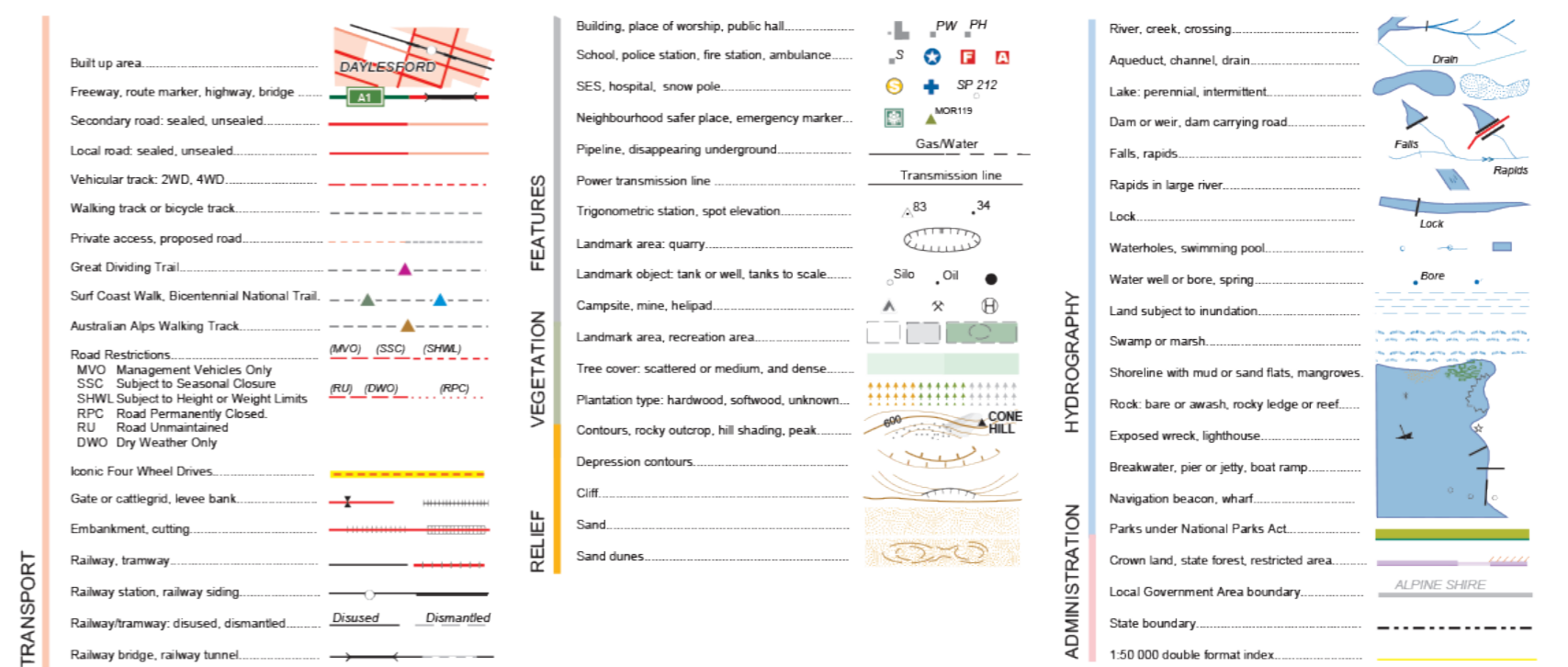


DigitalGlobe. (2018). [Lilydale aerial photograph]. Retrieved December, 2020, from Google Earth Pro.

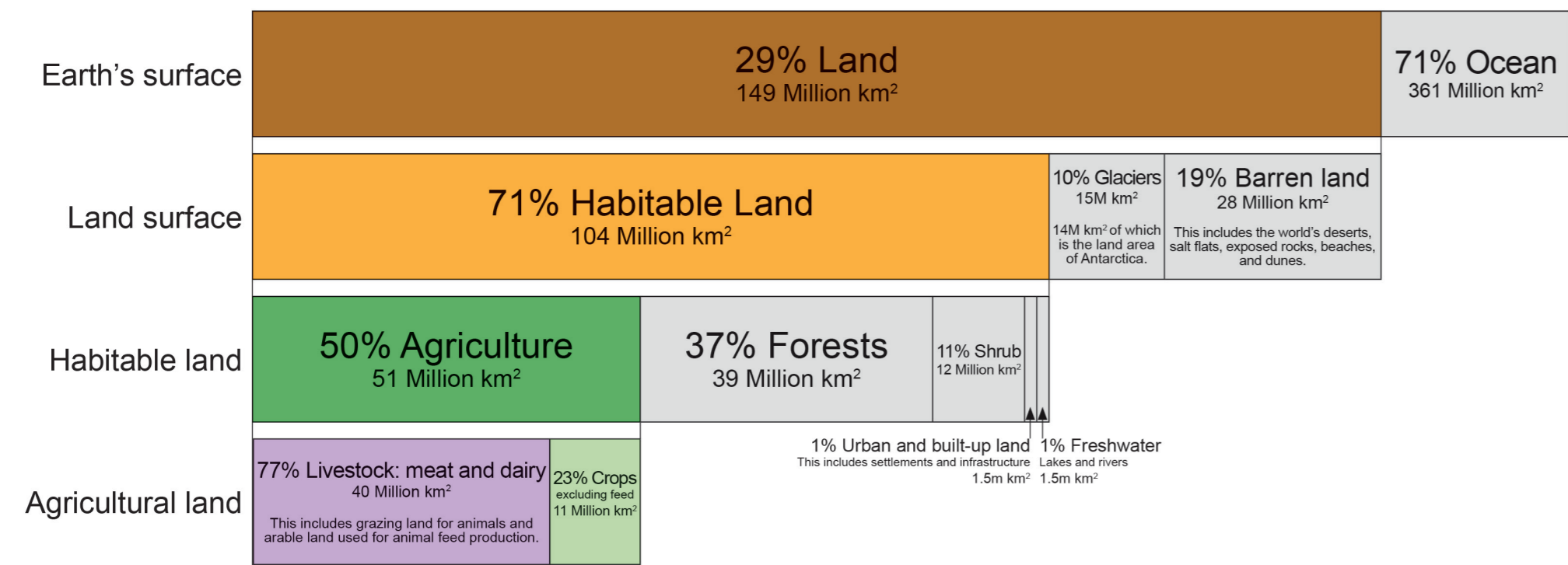
Source 4: Warburton Highway aerial photograph 2018



Adapted from: DigitalGlobe. (2018). [Wandin North aerial photograph]. Retrieved December, 2020, from Google Earth Pro.

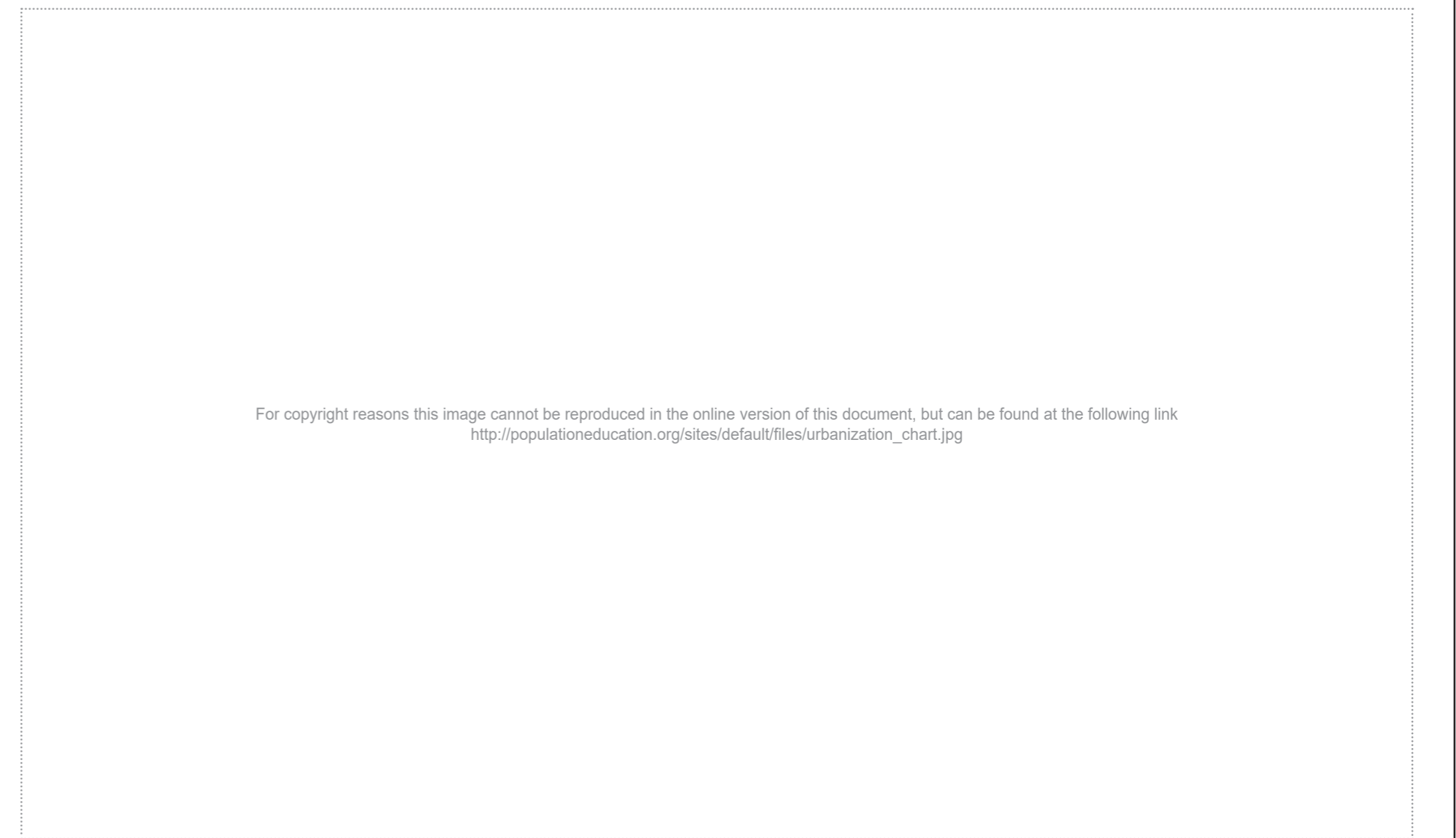


**Source 5: Global land cover**

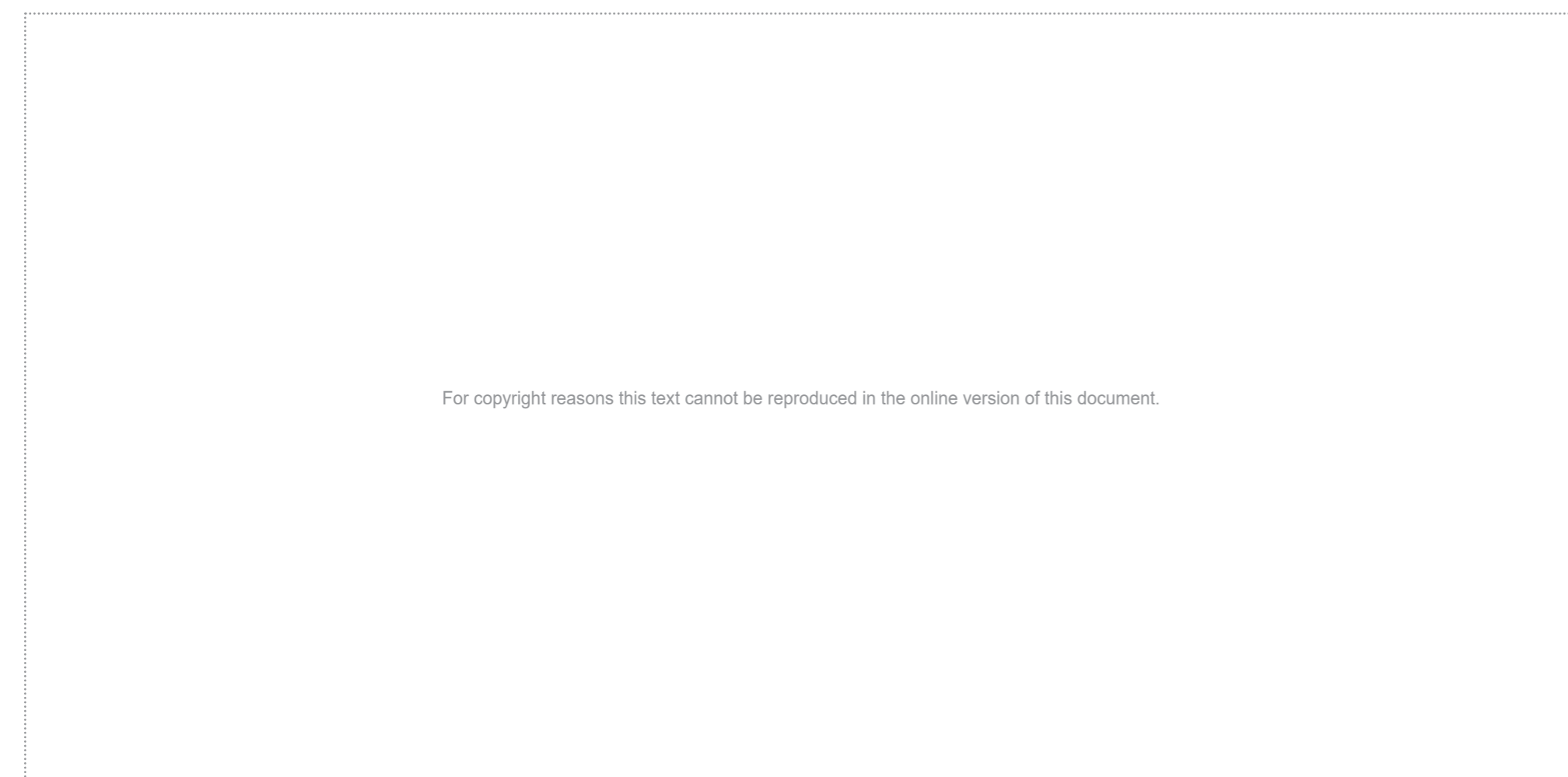


Adapted from: Ritchie, H., & Roser, M. (2019). Global land use for food production. In *Environmental impacts of food production*. Retrieved April, 2021, from <https://ourworldindata.org/environmental-impacts-of-food> Used under Creative Commons Attribution 4.0 International licence.

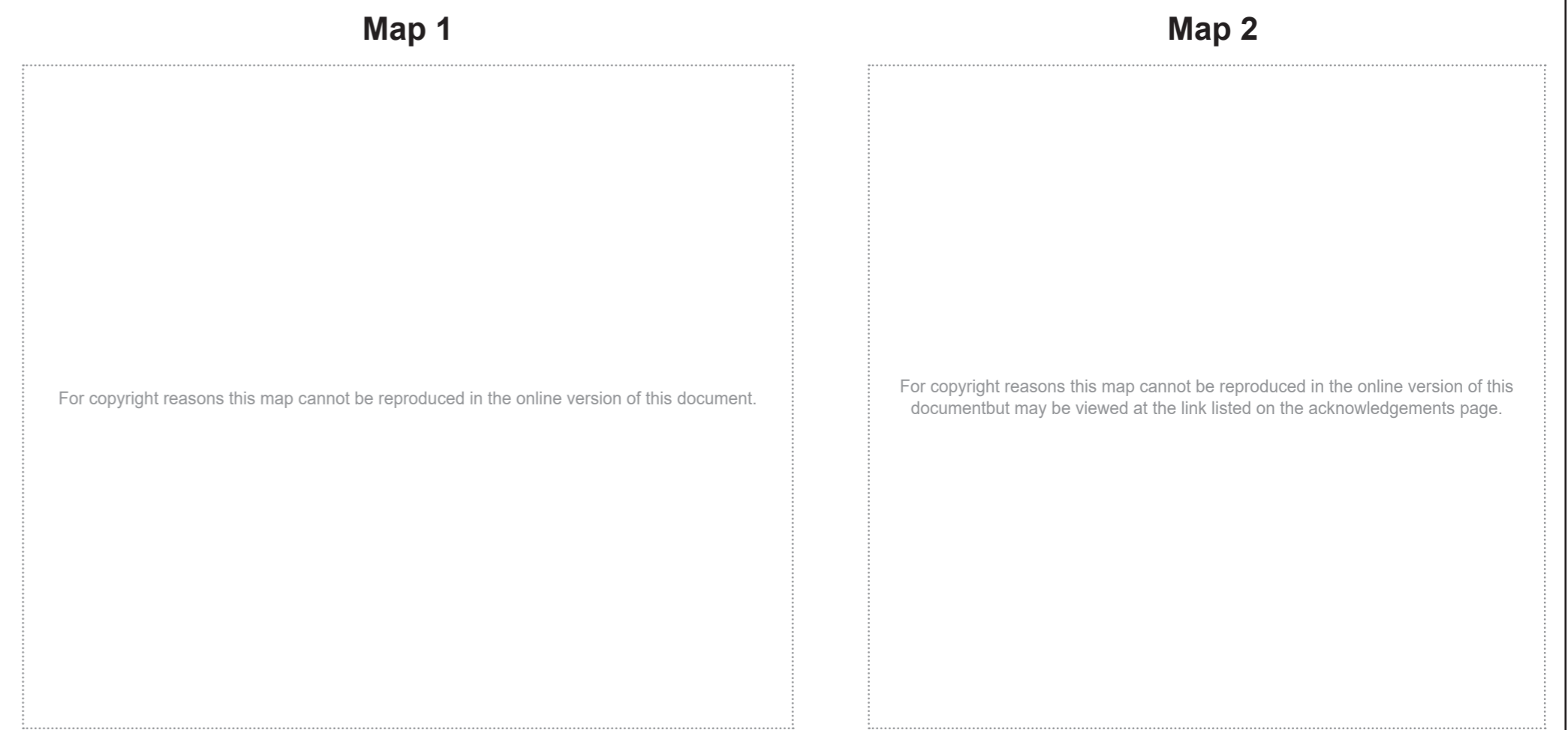
**Source 7: Percentage of the world's population living in urban areas**



**Source 6: Regional breakdown of threats to biodiversity**



**Source 8: Australia's population distribution**



Government of **Western Australia**  
**School Curriculum and Standards Authority**

